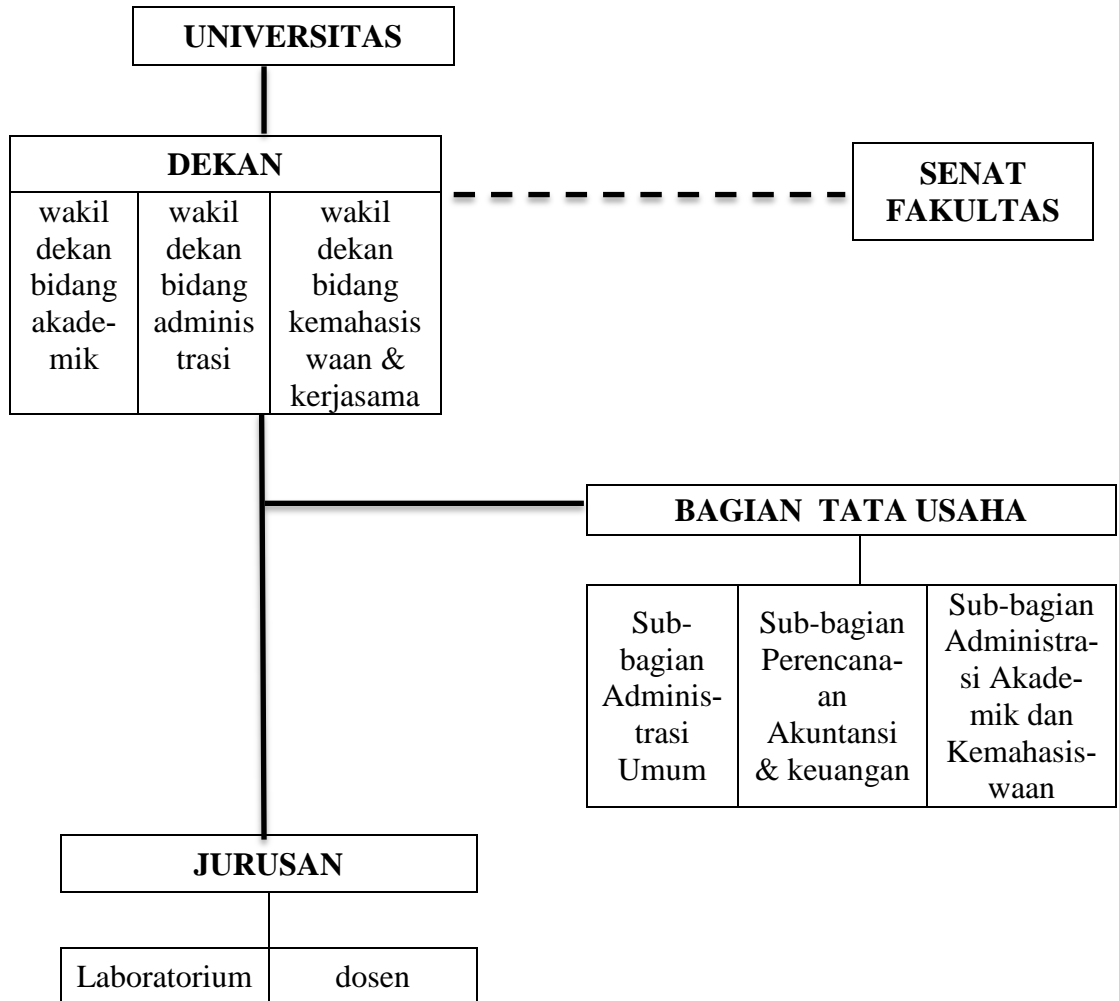


LAMPIRAN

LAMPIRAN 1

Struktur Organisasi Fakultas Psikologi UIN Maliki Malang



LAMPIRAN 2

SKALA

Nama :

Anak ke dari bersaudara

Umur :

Jenis kelamin : P / L

Petunjuk

Berikut ini terdapat beberapa pernyataan. Baca dan pahami baik-baik setiap pernyataan. Anda diminta untuk mengemukakan apakah pernyataan-pernyataan tersebut sesuai dengan diri Anda, dengan cara memberi tanda checklist (✓) dalam kotak di samping salah satu pilihan jawaban yang tersedia, yaitu:

SS = sangat sesuai

STS = sangat tidak sesuai

S = sesuai

TS = tidak sesuai

Apabila anda salah menjawab, berilah tanda sama dengan (≠). Kemudian checklist jawaban pengganti. Setiap orang dapat mempunyai jawaban yang berbeda dan tidak ada jawaban yang dianggap salah, karena itu pilihlah jawaban yang paling sesuai dengan diri Anda.

Contoh

No	Pernyataan	SS	S	TS	STS
1.	Hal yang ingin saya lakukan saat ini adalah				
	a. makan	✓			
	b. minum		✓		
	c. tidur		✓		
2.	d. jalan-jalan				✓
	Saya mempunyai banyak uang hari ini			✗	✓

☺ Keep Hammasah!!! ☺

No	Pernyataan	SS	S	TS	STS
1.	Teman sekamar sibuk dengan kegiatannya sendiri sehingga membuat saya merasa sepi dan bosan di kamar				
2.	Masyarakat sekitar saya terkadang menuntut saya untuk berperilaku seperti ini dan itu				
3.	Menurut saya masyarakat di sekitar saya cenderung kaku dengan aturan/norma yang ada, sehingga membuat saya kurang nyaman				
4.	Sikap saya menggunjing orang lain baik sengaja maupun				

	penyelesaian masalah ketika terkait dengan
	a. Masalah akademik dan masa depan
	b. Masalah dengan orang tua
	c. Masalah dengan teman
	d. kehidupan bermasyarakat
	e. moral perilaku dan penerapan agama
23.	Saya telah tahu apa tujuan saya nantinya setelah lulus kuliah

☺ *Arigato Gozaimasu* ☺

LAMPIRAN 3

SKORING SKALA PENELITIAN

1. skala tipe stresor

No	ite m 1	ite m 2	ite m 3	ite m 4	ite m 5	ite m 6	ite m 7	ite m 8	ite m 9	ite m 10	ite m 11	ite m 12	ite m 13	ite m 14	ite m 15	ite m 16	ite m 17	ite m 18	ite m 19	ite m 20	ite m 21	ite m 22	ite m 23	ite m 24	ite m 25
respon den 1	2	2	2	3	1	3	2	3	3	2	2	2	1	1	3	2	3	2	4	3	3	2	2	2	2
respon den 2	3	3	2	3	2	3	3	3	2	2	2	3	2	3	3	3	3	2	3	3	2	3	2	2	2
respon den 3	2	3	2	3	1	3	4	3	3	3	3	2	2	2	3	3	2	2	3	4	2	2	2	3	1
respon den 4	4	4	3	4	1	3	3	4	1	1	1	2	1	3	3	4	1	1	4	3	1	1	2	4	1
respon den 5	3	2	2	2	1	3	4	4	3	2	1	2	1	3	3	4	3	2	4	3	2	3	4	4	1
respon den 6	3	2	2	2	1	3	3	3	3	3	3	2	1	3	3	2	3	3	3	3	1	2	2	3	1
respon den 7	3	4	1	3	1	4	3	4	3	1	1	2	1	2	2	2	1	1	4	4	2	1	4	3	1
respon den 8	2	3	2	4	1	4	4	4	4	1	1	2	2	2	3	3	2	2	4	4	3	2	3	3	2
respon den 9	1	1	1	3	1	3	3	2	3	2	2	2	1	1	1	2	1	3	4	1	1	3	2	2	1
respon den 10	3	2	2	3	1	3	3	2	3	2	2	2	2	2	3	3	3	2	4	4	3	3	2	3	2

respon																									
den 11	4	3	1	2	1	3	4	2	3	4	4	1	3	1	1	3	2	2	3	3	4	1	2	3	3
respon																									
den 12	1	3	3	3	1	2	3	4	4	4	3	3	2	3	3	3	3	4	4	3	4	3	1	4	1
respon																									
den 13	3	2	2	4	2	3	4	2	3	3	3	4	2	3	3	3	3	3	4	4	3	4	4	4	1
respon																									
den 14	4	3	3	2	1	2	3	3	2	2	3	2	2	1	1	2	3	2	4	3	2	2	1	2	2
respon																									
den 15	3	4	2	3	1	4	4	4	4	3	4	2	2	1	3	3	3	3	4	3	3	3	2	4	1
respon																									
den 16	3	3	2	4	1	1	3	3	3	1	1	3	1	3	3	2	3	2	1	3	1	3	1	4	1
respon																									
den 17	3	3	2	4	1	1	4	4	3	1	1	2	1	3	3	2	3	2	1	3	1	3	1	4	1
respon																									
den 18	2	2	2	2	1	3	3	3	3	2	2	2	1	2	3	3	2	1	3	3	3	3	2	3	1
respon																									
den 19	2	4	3	3	1	3	4	4	4	4	4	2	1	3	3	4	3	3	3	4	3	3	3	3	2
respon																									
den 20	1	2	2	1	1	3	2	3	3	2	2	2	1	2	2	1	1	2	3	3	2	2	2	2	1
respon																									
den 21	2	3	3	4	1	2	3	4	3	2	2	2	1	1	1	3	3	1	3	3	1	2	2	3	1
respon																									
den 22	2	2	2	3	1	2	3	4	4	2	3	2	1	4	3	3	1	1	2	4	1	2	3	3	1
respon																									
den 23	1	2	1	2	1	2	2	3	3	3	3	2	1	1	1	3	2	1	3	3	1	2	2	2	1
respon																									
den 24	3	3	2	2	1	2	4	3	3	2	2	1	1	1	1	1	3	2	4	4	1	3	2	1	1

respon																									
den 25	2	3	3	3	1	3	4	4	4	3	3	2	1	2	2	3	3	2	3	4	1	3	3	3	3
respon																									
den 26	3	2	2	2	1	3	2	2	2	2	3	2	2	3	2	3	2	2	3	3	3	2	2	3	2
respon																									
den 27	3	4	4	3	3	3	4	4	3	4	4	2	4	4	4	3	3	1	3	3	1	3	4	3	2
respon																									
den 28	2	3	2	4	1	3	3	2	3	2	2	1	1	2	3	4	4	1	4	4	3	1	1	1	1
respon																									
den 29	2	2	3	3	1	3	2	3	3	3	3	2	2	2	2	4	2	2	3	3	2	2	2	2	2
respon																									
den 30	2	3	2	3	1	3	4	3	3	2	3	3	1	1	3	3	3	1	1	4	3	3	2	3	1
respon																									
den 31	3	3	3	3	1	3	3	3	3	2	2	3	2	2	1	3	3	2	3	4	2	4	3	2	2
respon																									
den 32	1	2	3	2	1	3	4	4	3	2	1	2	1	4	3	3	3	2	4	4	4	3	1	3	3
respon																									
den 33	2	2	2	3	1	3	2	2	3	2	2	2	3	2	2	3	1	1	3	3	2	1	2	3	3
respon																									
den 34	3	3	2	2	1	2	1	2	2	2	2	2	1	1	2	3	2	2	3	2	2	2	1	3	2
respon																									
den 35	2	4	4	2	1	1	4	2	3	1	1	1	1	4	4	1	4	1	4	3	4	1	1	1	1
respon																									
den 36	3	3	2	3	1	3	2	4	3	3	3	4	2	1	1	3	2	1	3	3	2	2	3	3	1
respon																									
den 37	1	1	1	4	1	1	4	3	3	1	1	2	1	3	3	3	4	2	4	4	1	3	2	3	1
respon																									
den 38	3	3	2	4	1	1	3	4	3	2	2	3	1	1	1	4	2	2	3	3	2	3	2	3	2

respon den 39	1	4	1	1	2	1	1	4	1	1	1	1	1	1	1	4	1	1	4	4	4	4	1	4	1
respon den 40	4	3	3	3	1	3	1	3	3	3	2	2	2	3	2	4	4	2	4	3	1	3	3	3	1
respon den 41	2	2	2	2	1	3	3	3	3	3	3	1	1	2	2	2	2	3	3	2	2	2	2	1	1
respon den 42	3	3	3	4	1	3	3	4	3	3	3	2	2	3	3	4	3	2	1	4	2	3	2	3	2
respon den 43	2	2	2	1	2	2	3	2	3	2	2	2	2	2	3	2	2	2	2	1	2	2	2	2	2
respon den 44	3	2	2	2	1	3	3	3	2	2	2	2	1	2	2	2	3	3	4	3	2	3	2	2	1
respon den 45	2	3	2	3	1	2	4	4	3	1	3	1	1	1	2	3	3	2	4	3	1	3	3	3	1
respon den 46	1	4	4	4	1	1	1	4	4	1	1	4	1	1	1	1	1	4	4	1	1	1	1	1	1
respon den 47	2	2	2	3	1	2	3	4	3	2	2	4	1	2	2	2	3	3	4	4	2	4	2	3	1
respon den 48	2	3	2	4	1	2	3	4	3	2	3	1	1	2	1	3	2	2	3	3	1	3	2	2	1
respon den 49	2	3	2	2	2	2	4	3	3	2	3	2	2	2	3	2	3	3	4	3	2	2	2	3	2
respon den 50	2	3	2	3	1	2	3	3	3	2	2	2	2	2	2	3	2	4	3	3	3	2	1	3	1
respon den 51	3	3	2	3	1	3	2	2	3	2	2	2	2	2	2	3	2	2	2	3	3	2	2	3	2
respon den 52	3	3	2	3	1	3	2	3	3	2	2	2	2	2	2	3	2	2	2	3	2	2	2	3	2

respon den 53	2	2	2	3	2	2	3	3	3	3	3	2	2	2	2	2	3	2	3	3	2	2	2	3	2
respon den 54	2	3	2	2	1	2	3	3	3	3	3	1	1	1	1	2	3	2	4	3	2	3	2	3	2
respon den 55	2	1	1	3	1	1	1	3	3	3	3	2	1	1	1	2	2	1	3	3	3	3	1	3	1
respon den 56	2	1	1	3	1	1	1	3	3	3	3	2	1	1	1	3	3	1	3	3	3	3	1	3	1
respon den 57	1	4	3	3	2	3	3	4	3	3	3	3	2	3	3	3	2	2	4	3	3	3	2	3	2
respon den 58	2	3	1	2	1	2	3	3	3	3	2	1	1	2	3	3	3	2	4	3	3	1	2	3	1
respon den 59	2	2	2	4	1	3	3	3	3	3	2	2	1	3	3	3	4	2	4	4	3	3	3	2	2
respon den 60	2	1	1	2	1	2	4	2	3	2	2	1	1	3	1	2	1	1	3	3	1	3	2	2	1
respon den 61	1	3	3	2	1	3	3	4	3	4	3	1	1	2	3	3	2	2	4	3	3	3	3	3	2
respon den 62	3	3	4	4	1	1	4	3	3	2	3	3	1	4	3	3	3	2	1	4	2	3	1	3	1
respon den 63	2	2	3	3	1	3	3	3	3	4	3	3	1	2	2	3	3	2	4	3	2	3	2	3	1
respon den 64	2	3	3	3	1	2	3	3	3	3	3	2	2	2	3	3	2	2	2	3	2	3	2	3	2
respon den 65	2	3	3	2	1	2	3	3	4	1	2	1	1	1	1	2	3	1	3	3	2	2	1	2	2
respon den 66	3	3	3	2	1	2	2	2	3	2	1	2	1	1	1	1	3	2	3	3	2	2	1	3	1

respon den 67	1	2	2	3	1	2	4	3	2	2	3	1	2	3	3	2	1	2	4	4	3	1	3	2	1
respon den 68	2	4	3	4	1	2	3	3	3	3	2	2	2	2	2	3	2	2	3	3	2	2	2	2	2
respon den 69	2	2	2	2	3	2	3	2	3	2	1	2	1	1	2	2	2	2	3	3	2	3	2	2	2
respon den 70	1	2	2	3	1	3	2	3	3	3	3	2	1	1	1	3	2	2	3	3	2	3	3	3	2
respon den 71	4	4	3	3	1	4	4	3	4	3	4	4	1	4	4	3	3	3	3	3	2	3	4	4	3

2. skala proaktif koping

No	item 1							item 6					item 10			item 14				item 19			item 20		item 22																						
	a	b	c	d	e	f	g	a	b	c				a	b	c	D	e	a	b	c	d	e	a	b	c	a	b	c	d	e																
1	3	3	3	2	3	3	3	2	3	3	3	3	4	3	2	3	3	3	3	3	3	3	3	2	3	4	2	3	2	2	2	3	2	3	2	2	2	3	3	3	3	3	3	3			
2	3	3	3	2	3	3	3	3	3	3	3	3	3	3	3	3	3	3	3	3	3	3	3	2	3	3	3	3	3	3	3	3	2	3	2	3	3	3	3	3	3	3	3	3			
3	2	3	3	3	3	3	3	4	2	3	3	3	3	3	3	3	4	3	3	3	3	3	3	3	3	3	3	3	3	3	3	3	3	3	4	3	1	4	3	3	3	3	3	3			
4	4	4	4	4	4	4	4	4	3	4	4	4	4	4	4	4	4	4	4	4	4	4	4	4	4	4	4	4	4	4	4	4	4	4	4	4	3	4	3	4	4	3	4	4	4		
5	2	3	3	3	3	2	3	4	3	3	4	3	3	3	3	3	2	4	4	3	3	3	3	3	4	3	3	3	4	3	3	3	3	4	3	4	4	4	3	4	3	3	3	3	3	4	
6	2	3	3	3	3	2	2	3	2	3	4	4	3	4	3	2	3	4	3	3	4	3	4	4	2	4	2	3	4	3	3	3	3	3	3	4	4	3	3	4	3	3	4	3	3	3	4
7	1	3	3	3	3	4	2	4	2	4	4	4	3	3	3	4	4	2	4	4	4	4	4	4	2	4	3	4	3	3	4	3	4	4	4	4	4	4	4	2	4	4	4	4	4	3	

8 3 3 3 3 4 4 3 3 2 3 4 3 2 3 4 3 4 3 3 3 3 3 2 3 3 3 3 3 3 4 3 3 2 3 3 2 4 3 3 3 3 3 3 3
9 3 3 3 3 3 3 3 4 3 3 4 4 4 4 4 3 3 3 3 3 3 3 3 3 3 3 3 4 4 3 4 2 2 3 4 3 3 3 3 3 3 3
1
0 3 3 3 3 3 3 2 4 2 4 4 4 3 3 4 4 4 3 3 3 3 3 3 4 3 3 4 4 4 4 3 4 4 4 4 4 4 3 3 3 3 3 4 4
1
1 2 3 4 2 3 2 2 3 2 4 3 2 3 3 3 4 4 4 3 2 2 2 1 3 3 4 4 3 3 3 4 4 4 4 2 3 2 4 3 4 2 2 3 4 2
1
2 3 3 3 2 2 3 4 4 2 3 4 4 1 1 4 3 4 3 3 3 3 3 1 4 3 3 3 3 3 3 4 4 4 4 4 3 3 4 2 3 3 3 3 3 4
1
3 3 2 3 3 3 4 2 3 3 2 4 2 3 3 3 3 3 4 4 4 4 4 2 4 2 2 4 4 4 4 4 3 4 3 2 2 2 4 3 3 3 3 3 4 2
1
4 3 3 3 2 2 3 4 4 3 3 3 3 3 3 4 4 4 2 2 2 3 3 3 4 3 3 2 2 3 3 3 3 3 2 3 3 3 4 3 3 3 3 3 3
1
5 3 4 3 2 3 3 3 3 3 4 4 3 2 3 2 4 4 4 3 3 3 2 2 3 3 3 2 2 2 3 4 4 3 4 3 3 3 2 3 4 2 2 2 3
1
6 3 3 4 3 4 3 4 4 3 3 4 4 3 4 4 4 4 4 4 4 4 4 2 4 3 4 4 4 4 4 4 4 4 4 4 4 4 4 4 4 4 4 4
1
7 3 3 4 3 4 3 4 4 3 3 4 4 3 4 4 4 4 4 4 4 4 4 2 4 3 4 4 4 4 4 4 4 4 4 4 4 4 4 4 4 4 4 4
1
8 2 3 3 3 2 2 3 3 2 3 3 3 2 2 4 4 3 3 3 3 3 3 3 3 2 3 3 3 3 3 3 3 3 3 3 3 3 2 3 3 3 3 3 3
1
9 3 2 2 2 3 3 2 3 3 3 4 3 3 2 3 3 3 3 3 3 3 3 2 3 2 3 3 3 3 3 4 3 3 3 4 3 3 4 3 3 3 3 3 2
2
0 3 3 3 3 3 3 3 3 3 3 3 3 3 3 3 3 4 3 4
2
1 3 4 4 4 4 4 4 4 3 4 4 4 3 3 3 4 4 4 3 4 4 4 3 4 3 4 3 3 3 4 4 4 4 4 4 3 3 4 4 4 4 4 3
2
2 3 3 3 3 3 3 3 3 3 2 3 3 3 3 3 4 4 4 4 4 4 4 3 4 3 3 3 3 3 3 3 3 3 3 3 3 3 3 3 3 3 3 4
2 3 3 3 3 3 3 3 4 2 3 3 4 4 4 3 3 3 3 3 3 3 2 3 4 3

3
7 3 4 4 4 4 4 4 3 3 3 4 4 4 3 3 4 4 4 4 4 4 2 4 3 3 4 3 3 4 4 3 4 3 4 3 3 4 3 3 4 3 3 4 3 4 3
3
8 3 3 3 3 3 3 3 4 3 3 4 4 4 4 4 4 4 4 4 4 4 3 4 3 4 4 4 4 4 4 3 3 4 4 4 4 4 4 4 4 4 4 4 4 2
3
9 4 4 4 1 1 4 4 4 1 4 4 4 1 1 4 4 4 4 4 4 4 4 4 4 4 4 4 4 4 4 4 4 1 1 4 4 4 4 4 4 4 4 4
4
0 2 3 2 3 3 3 3 3 2 3 4 3 2 3 3 3 4 3 3 3 3 3 2 3 2 3 3 3 3 3 3 3 3 3 3 2 2 4 4 3 3 3 3 3 3
4
1 3 3 3 3 3 3 3 3 3 3 4 3 3 3 2 3
4
2 3 4 3 3 3 4 3 4 1 4 4 4 3 3 4 4 4 4 3 3 4 4 3 4 4 3 4 4 2 4 4 3 3 4 3 4 4 3 3 3 4 3 4 4 3 3 3 4
4
3 2 3 3 3 3 3 3 4 4 4 4 3 3 3 4
4
4 3 3 3 3 4 3 3 3 2 3 3 3 3 3 4 3 3 3 3 3 3 3 3 3 3 3 3 4 3 3 3 3 3 3 4 3 3 3 3 3 3 3 4
4
5 2 4 4 4 4 4 4 4 2 4 4 4 1 3 3 4 4 3 3 3 3 3 3 4 3 4 4 4 4 4 4 4 4 4 4 4 4 4 3 4 4 4 4 4 4
4
6 1 4 4 4 4 4 4 4 1 4 4 1 1 1 4 4 4 1 1 1 1 1 4
4
7 3 3 3 3 1 3 3 4 3 4 4 4 2 2 3 4 4 4 2 4 4 4 2 4 4 4 2 4 4 3 2 2 3 3 4 4 4 4 2 3 3 4 3 3 3 3 3 4
4
8 3 3 2 2 3 3 3 4 1 3 4 4 2 2 4 4 3 4 3 3 3 3 3 3 2 4 4 3 3 3 3 3 3 2 4 4 4 4 2 4 4 3 3 4 2
4
9 2 3 3 2 2 2 3 4 3 3 4 4 2 3 4 4 4 4 4 4 4 4 3 3 3 3 3 3 3 3 3 3 4 4 4 4 2 3 3 3 3 3 3
5
0 1 3 4 3 3 3 3 4 4 3 4 2 3 2 4 3 3 3 3 3 3 3 3 4 3 4 4 4 4 4 4 3 4 3 4 4 4 4 4 4 4 4 4 4 4

5
1 3 3 3 3 2 3 3 3 2 3 3 3 3 3 3 3 3 3 3 3 3 3 2 3 3 3 3 3 3 3 3 3 3 3 2 2 3 2 3 3 3 3 3 3
5
2 3 3 3 3 2 3 3 3 2 3 3 3 3 3 3 3 3 3 3 3 3 2 3 2 3 3 3 3 3 3 3 3 3 3 3 3 2 3 2 3 3 3 3 3 3
5
3
5
4 3 2 3 3 3 3 3 2 2 3 3 3 3 3 3 3 4 3 3 3 3 3 2 4 2 3 3 3 3 3 3 4 3 3 3 3 3 4 3 3 3 3 3 3
5
5 3 3 3 3 3 3 3 3 2 3 4 3 2 2 3 3 4 4 4 3 3 3 2 3 3 3 3 3 3 4 3 3 3 4 3 3 4 3 3 3 3 3 4
5
6 3 3 3 3 3 3 3 3 2 3 3 3 2 2 3 4 3 3 4 3 3 3 2 3 3 4 3 3 3 3 4 3 3 3 4 3 3 4 3 4 4 3 3 3 4
5
7 3 3 2 2 3 3 2 3 2 3 3 3 3 3 3 3 3 3 3 3 2 3 2 3 3 3 2 3 4 4 4 3 3 2 3 2 4 3 3 3 3 3 4 3
5
8 3 3 3 3 3 3 3 4 3 3 4 4 4 4 4 4 4 4 4 4 4 4 4 4 4 4 3 3 3 3 3 4 4 3 4 4 3 3 4 4 4 4 4 4 4
5
9 3 3 4 2 3 3 4 3 3 3 4 4 3 4 3 4 3 3 3 3 3 3 3 3 3 3 4 3 3 3 4 4 4 3 4 3 3 4 4 3 3 3 3 3 4
6
0 4 4 4 4 4 4 4 4 2 3 4 3 3 3 3 4 4 4 4 4 4 4 4 4 4 4 4 4 4 4 3 4 4 4 4 4 4 4 4 4 4 4 4 4
6
1 3 2 2 2 3 2 3 3 2 2 4 3 4 3 2 4 4 4 4 3 3 3 2 2 3 2 3 3 2 4 3 2 2 2 3 3 1 4 2 3 3 2 4 3 4
6
2 3 4 4 3 3 4 4 4 2 4 4 4 3 3 4 4 4 4 4 4 4 4 4 4 4 4 4 4 4 4 4 3 4 4 4 4 2 4 4 4 4 4 4
6
3 3 4 3 3 3 3 3 3 3 3 3 4 2 2 4 3 3 3 4 4 3 3 3 3 3 3 3 3 3 3 3 3 3 3 3 3 4 3 2 3 3 3 3 3 4
6
4 3 4 3 3 3 3 3 3 2 2 4 3 3 3 3 4 3 4 4 4 3 4 3 3 3 3 4 4 4 4 3 3 3 3 3 3 3 3 3 3 3 3 3 4 2 3 3 2 3 3 3

6
5 3 4 3 4 3 3 3 4 3 3 4 4 3 3 4 4 4 3 3 4 4 3 3 3 3 4 4 4 4 4 4 4 4 3 3 4 4 4 3 4 4 4 3 3 3
6
6 2 3 4 3 3 3 3 3 3 3 3 3 3 3 3 3 3 3 3 3 2 2 2 3 3 3 3 3 3 3 3 4 3 3 3 4 3 3 3 3 3 3
6
7 3 4 2 3 3 3 4 4 3 4 4 4 3 3 3 3 3 4 3 2 3 3 2 3 2 4 3 3 3 3 4 4 3 4 4 4 2 4 3 4 3 3 3 3 3
6
8 1 3 3 3 4 4 3 3 3 3 4 3 4 3 3 4 3 3 3 3 3 3 3 3 4 3 3 3 3 3 4 3 3 3 4 4 3 4 3 3 3 3 3 4
6
9 3 4 2 3 3 3 4 3 3 3 3 3 3 4 3
7
0 3 3 3 3 2 3 3 4 3 4 4 3 4 3 4 4 4 3 3 2 3 2 3 4 4 3 3 3 2 2 3 3 4 4 4 3 3 4 4 3 2 3 3 3 2
7
1 2 3 3 2 2 2 2 3 2 2 3 4 3 4 3 3 3 3 2 2 2 2 2 3 3 3 3 3 3 4 3 4 2 2 3 2 3 2 2 2 2 2 2 3

LAMPIRAN 4

RELIABILITAS

Reliability

Scale: skala tipe stresor

Case Processing Summary

		N	%
Cases	Valid	71	100.0
	Excluded ^a	0	.0
	Total	71	100.0

a. Listwise deletion based on all variables in the procedure.

Reliability Statistics

Cronbach's Alpha	Cronbach's Alpha Based on Standardized Items	N of Items
.762	.760	25

Item Statistics

	Mean	Std. Deviation	N
item1	2.2817	.83123	71
item2	2.6901	.82100	71
item3	2.2394	.76466	71
item4	2.8310	.81040	71
item5	1.1549	.43582	71
item6	2.4507	.80691	71
item7	2.9718	.89398	71
item8	3.1268	.71573	71
item9	2.9859	.57304	71

item10	2.3239	.84134	71
item11	2.3521	.86352	71
item12	2.0704	.78055	71
item13	1.4366	.62638	71
item14	2.0986	.94347	71
item15	2.2394	.90182	71
item16	2.7183	.77797	71
item17	2.4648	.82516	71
item18	1.9859	.74629	71
item19	3.2113	.86049	71
item20	3.1690	.67583	71
item21	2.1690	.87808	71
item22	2.4789	.79028	71
item23	2.0845	.82369	71
item24	2.7465	.76938	71
item25	1.5211	.62927	71

Summary Item Statistics

	Mean	Minimum	Maximum	Range	Maximum / Minimum	Variance	N of Items
Item Means	2.392	1.155	3.211	2.056	2.780	.283	25
Item Variances	.614	.190	.890	.700	4.686	.027	25
Inter-Item Covariances	.070	-.157	.605	.761	-3.858	.009	25
Inter-Item Correlations	.112	-.250	.745	.995	-2.979	.022	25

Item-Total Statistics

	Scale Mean if Item Deleted	Scale Variance if Item Deleted	Corrected Item- Total Correlation	Squared Multiple Correlation	Cronbach's Alpha if Item Deleted
item1	57.5211	54.167	.188	.610	.761
item2	57.1127	52.959	.295	.601	.754
item3	57.5634	52.792	.340	.611	.752
item4	56.9718	53.628	.242	.519	.758
item5	58.6479	56.203	.117	.517	.762
item6	57.3521	51.803	.405	.606	.747
item7	56.8310	51.314	.394	.520	.748
item8	56.6761	53.822	.269	.535	.756
item9	56.8169	54.837	.235	.483	.758
item10	57.4789	51.825	.382	.693	.749
item11	57.4507	52.080	.348	.645	.751
item12	57.7324	53.313	.284	.509	.755
item13	58.3662	53.750	.329	.516	.753
item14	57.7042	50.640	.419	.670	.746
item15	57.5634	49.878	.508	.758	.739
item16	57.0845	52.164	.391	.551	.749
item17	57.3380	52.770	.309	.600	.753
item18	57.8169	54.495	.191	.444	.760
item19	56.5915	57.045	-.048	.489	.776
item20	56.6338	53.407	.334	.540	.753
item21	57.6338	55.093	.099	.549	.767
item22	57.3239	53.994	.219	.568	.759
item23	57.7183	51.205	.448	.651	.745

item24	57.0563	52.511	.364	.525	.750
item25	58.2817	54.348	.260	.349	.756

Scale Statistics

Mean	Variance	Std. Deviation	N of Items
59.8028	57.161	7.56046	25

ANOVA

	Sum of Squares	df	Mean Square	F	Sig
Between People	160.050	70	2.286		
Within People					
Between Items	482.723	24	20.113	36.957	.000
Residual	914.317	1680	.544		
Total	1397.040	1704	.820		
Total	1557.090	1774	.878		

Grand Mean = 2,3921

Reliability

Scale: skala proaktif koping

Case Processing Summary

	N	%
Cases Valid	71	100.0
Excluded ^a	0	.0
Total	71	100.0

a. Listwise deletion based on all variables in the procedure.

Reliability Statistics

Cronbach's Alpha	Cronbach's Alpha Based on Standardized Items	N of Items
.931	.935	45

Item Statistics

	Mean	Std. Deviation	N
item1a	2.7465	.64848	71
item1b	3.2535	.55339	71
item1c	3.0986	.61307	71
item1d	2.7887	.67434	71
item1e	2.9437	.67374	71
item1f	3.0845	.60348	71
item1g	3.0704	.68293	71
item2	3.4366	.55375	71
item3	2.5352	.69346	71
item4	3.1690	.56025	71
item5	3.6338	.51379	71
item6a	3.3944	.66502	71
item6b	2.8592	.74250	71
item6c	2.8873	.72800	71
item7	3.3803	.61797	71
item8	3.5775	.52541	71
item9	3.5352	.50231	71
item10a	3.4225	.60147	71
item10b	3.2676	.63150	71
item10c	3.2254	.65894	71
item10d	3.2535	.62606	71
item10e	3.2254	.68028	71
item11	2.6901	.74817	71
item12	3.4225	.55193	71

item13	3.0423	.66411	71
item14a	3.2676	.55953	71
item14b	3.3521	.58794	71
item14c	3.1831	.59305	71
item14d	3.2254	.56561	71
item14e	3.2958	.57057	71
item15	3.5211	.50311	71
item16	3.4225	.55193	71
item17	3.3662	.59135	71
item18	3.3239	.64972	71
item19a	3.4648	.69346	71
item19b	3.2535	.64848	71
item19c	2.9718	.79232	71
item20	3.6901	.57549	71
item21	3.0704	.63973	71
item22a	3.3521	.53715	71
item22b	3.3239	.55484	71
item22c	3.1408	.59271	71
item22d	3.1690	.53415	71
item22e	3.2394	.62025	71
item23	3.3521	.71910	71

Summary Item Statistics

	Mean	Minimum	Maximum	Range	Maximum / Minimum	Variance	N of Items
Item Means	3.221	2.535	3.690	1.155	1.456	.063	45
Item Variances	.386	.252	.628	.375	2.488	.008	45
Inter-Item Covariances	.089	-.121	.355	.476	-2.934	.004	45
Inter-Item Correlations	.242	-.243	.829	1.072	-3.409	.030	45

Item-Total Statistics

	Scale Mean if Item Deleted	Scale Variance if Item Deleted	Corrected Item- Total Correlation	Squared Multiple Correlation	Cronbach's Alpha if Item Deleted
item1a	142.1831	190.695	.176	.	.932
item1b	141.6761	187.108	.453	.	.930
item1c	141.8310	185.228	.519	.	.929
item1d	142.1408	186.666	.388	.	.930
item1e	141.9859	187.671	.333	.	.931
item1f	141.8451	185.961	.482	.	.930
item1g	141.8592	186.523	.390	.	.930
item2	141.4930	184.396	.636	.	.928
item3	142.3944	191.128	.139	.	.933
item4	141.7606	187.413	.426	.	.930
item5	141.2958	186.811	.512	.	.929
item6a	141.5352	187.567	.344	.	.931
item6b	142.0704	191.352	.115	.	.933
item6c	142.0423	189.612	.206	.	.932
item7	141.5493	188.051	.344	.	.931
item8	141.3521	188.489	.381	.	.930
item9	141.3944	187.557	.469	.	.930
item10a	141.5070	186.454	.454	.	.930
item10b	141.6620	185.741	.472	.	.930
item10c	141.7042	183.668	.569	.	.929
item10d	141.6761	183.079	.637	.	.928
item10e	141.7042	184.326	.513	.	.929
item11	142.2394	183.556	.501	.	.929
item12	141.5070	184.225	.650	.	.928
item13	141.8873	186.844	.385	.	.930
item14a	141.6620	183.713	.675	.	.928
item14b	141.5775	185.362	.535	.	.929
item14c	141.7465	184.249	.600	.	.929
item14d	141.7042	184.183	.636	.	.928

item14e	141.6338	183.893	.649	.928
item15	141.4085	187.588	.466	.930
item16	141.5070	185.968	.531	.929
item17	141.5634	187.707	.383	.930
item18	141.6056	184.671	.519	.929
item19a	141.4648	183.481	.549	.929
item19b	141.6761	184.908	.507	.929
item19c	141.9577	181.641	.562	.929
item20	141.2394	189.813	.260	.931
item21	141.8592	186.180	.440	.930
item22a	141.5775	183.247	.738	.928
item22b	141.6056	183.328	.708	.928
item22c	141.7887	182.626	.705	.928
item22d	141.7606	184.642	.643	.928
item22e	141.6901	183.874	.595	.929
item23	141.5775	189.647	.207	.932

ANOVA

	Sum of Squares	df	Mean Square	F	Sig
Between People	302.192	70	4.317		
Within People					
Between Items	196.423	44	4.464	15.030	.000
Residual	914.822	3080	.297		
Total	1111.244	3124	.356		
Total	1413.437	3194	.443		

Grand Mean = 3,2207

LAMPIRAN 5

HASIL UJI NORMALITAS

One-Sample Kolmogorov-Smirnov Test

		fisio seksual	akademik	identitas diri	sosial	agama	proaktif koping
N		71	71	71	71	71	71
Normal Parameters ^a	Mean	7.3099	10.9718	2.7183	14.2958	5.4085	130.5493
	Std. Deviation	2.27779	1.97102	.77797	2.49797	1.53602	13.28349
Most Extreme Differences	Absolute	.098	.122	.303	.107	.140	.150
	Positive	.098	.104	.232	.107	.140	.150
	Negative	-.098	-.122	-.303	-.090	-.115	-.065
Kolmogorov-Smirnov Z		.825	1.024	2.556	.904	1.180	1.266
Asymp. Sig. (2-tailed)		.504	.245	.000	.387	.123	.081

a. Test distribution is Normal.

HASIL UJI MULTIKOLINEARITAS

Coefficient Correlations^a

Model		agama	fisio seksual	identitas diri	akademik	sosial	
1	Correlations	agama	1.000	-.080	-.167	-.161	-.131
		fisio seksual	-.080	1.000	.036	-.042	-.386
		identitas diri	-.167	.036	1.000	-.292	-.141
		akademik	-.161	-.042	-.292	1.000	-.257
		sosial	-.131	-.386	-.141	-.257	1.000
Covariances	agama	.721	-.040	-.244	-.097	-.065	
	fisio seksual	-.040	.345	.036	-.017	-.133	
	identitas diri	-.244	.036	2.983	-.360	-.142	
	akademik	-.097	-.017	-.360	.508	-.107	
	sosial	-.065	-.133	-.142	-.107	.343	

a. Dependent Variable: proaktif koping

LAMPIRAN 6

HASIL UJI PENGARUH

Regression

Descriptive Statistics

	Mean	Std. Deviation	N
PROKOP	1.3055E2	13.28349	71
FIS	7.3099	2.27779	71
AKA	10.9718	1.97102	71
IDI	2.7183	.77797	71
SOS	14.2958	2.49797	71
AGA	5.4085	1.53602	71

Variables Entered/Removed^b

Model	Variables Entered	Variables Removed	Method
1	AGA, FIS, IDI, AKA, SOS ^a		. Enter

a. All requested variables entered.

b. Dependent Variable: PROKOP

Model Summary^b

Model	R	R Square	Adjusted R Square	Std. Error of the Estimate	Change Statistics					Durbin-Watson
					R Square Change	F Change	df1	df2	Sig. F Change	
1	.693 ^a	.480	.440	9.93762	.480	12.014	5	65	.000	1.940

a. Predictors: (Constant), AGA, FIS, IDI, AKA, SOS

b. Dependent Variable:
PROKOP

Coefficients^a

Model	Unstandardized Coefficients		Standardized Coefficients	T	Sig.	95% Confidence Interval for B		Correlations			Collinearity Statistics	
	B	Std. Error				Lower Bound	Upper Bound	Zero-order	Partial	Partial	Tolerance	VIF
	1 (Constant)	160.087	8.188		19.552	.000	143.735	176.440				
FIS	1.774	.588	.304	3.018	.004	.600	2.948	.127	.351	.270	.787	1.270
AKA	-2.370	.713	-.352	-3.325	.001	-3.794	-.947	-.370	-.381	-.297	.715	1.399
IDI	4.400	1.727	.258	2.548	.013	.951	7.850	-.025	.301	.228	.781	1.280
SOS	-.119	.586	-.022	-.204	.839	-1.289	1.050	-.129	-.025	-.018	.659	1.517
AGA	-4.946	.849	-.572	-5.824	.000	-6.642	-3.250	-.551	-.586	-.521	.829	1.206

a. Dependent Variable:
PROKOP

ANOVA^b

Model		Sum of Squares	df	Mean Square	F	Sig.
1	Regression	5932.415	5	1186.483	12.014	.000 ^a
	Residual	6419.163	65	98.756		
	Total	12351.577	70			

a. Predictors: (Constant), AGA, FIS, IDI, AKA, SOS

b. Dependent Variable: PROKOP

Residuals Statistics^a

	Minimum	Maximum	Mean	Std. Deviation	N
Predicted Value	107.1685	153.3015	1.3055E2	9.20591	71
Residual	-1.94916E1	18.06616	.00000	9.57613	71
Std. Predicted Value	-2.540	2.471	.000	1.000	71
Std. Residual	-1.961	1.818	.000	.964	71

a. Dependent Variable: PROKOP

Charts

Histogram

