

LAMPIRAN

Lampiran 1 : Data Hasil Pengamatan

a) Data Laju Perkecambahan (Hari)

KONSENTRASI	LAMA PERENDAMAN	ULANGAN			TOTAL	RATA-RATA
		1	2	3		
K1 (0 %)	L1 (30 menit)	14	14	14	42	14
	L2 (40 menit)	13.8	14	13.7	41.5	13.8333
	L3 (50 menit)	14	13.2	13.7	40.9	13.6333
	L4 (60 menit)	12.7	11.7	12.1	36.5	12.1667
K2 (75%)	L1 (30 menit)	6.7	5.9	6.2	18.8	6.26667
	L2 (40 menit)	7.1	5.7	6.3	19.1	6.36667
	L3 (50 menit)	6.5	5.9	6.3	18.7	6.23333
	L4 (60 menit)	5.3	5.1	4.6	15	5
K3 (85%)	L1 (30 menit)	5.3	5.2	4.7	15.2	5.06667
	L2 (40 menit)	4.8	4.2	4.5	13.5	4.5
	L3 (50 menit)	5.1	3.7	4.7	13.5	4.5
	L4 (60 menit)	3.7	3.4	2.8	9.9	3.3
K4 (95%)	L1 (30 menit)	3.6	3.2	4.1	10.9	3.63333
	L2 (40 menit)	4.4	4.3	3.2	11.9	3.96667
	L3 (50 menit)	3.5	1.8	3.7	9	3
	L4 (60 menit)	2.3	1.7	2.7	6.7	2.23333
TOTAL		112.8	103	107.3	323.1	107.7

b) Data Persentase Daya Berkecambah (%)

KONSENTRASI	LAMA PERENDAMAN	ULANGAN			TOTAL	RATA-RATA
		1	2	3		
K1 (0 %)	L1 (30 menit)	4	0	2	6	2
	L2 (40 menit)	4	0	6	10	3,33333
	L3 (50 menit)	0	10	4	14	4,66667
	L4 (60 menit)	20	18	16	54	18
K2 (75%)	L1 (30 menit)	36	34	34	104	34,6667
	L2 (40 menit)	40	42	38	120	40
	L3 (50 menit)	48	46	50	144	48
	L4 (60 menit)	52	50	54	156	52
K3 (85%)	L1 (30 menit)	78	76	74	228	76
	L2 (40 menit)	84	84	82	250	83,3333
	L3 (50 menit)	92	94	94	280	93,3333
	L4 (60 menit)	96	98	94	288	96
K4 (95%)	L1 (30 menit)	76	72	68	216	72
	L2 (40 menit)	80	74	76	230	76,6667
	L3 (50 menit)	80	82	84	246	82
	L4 (60 menit)	88	88	86	262	87,3333
TOTAL		878	868	862	2608	869,333

c) Data Panjang Hipokotil (cm)

KONSENTRASI	LAMA PERENDAMAN	ULANGAN			TOTAL	RATA-RATA
		1	2	3		
K1 (0 %)	L1 (30 menit)	3.2	0	3.6	6.8	2.26667
	L2 (40 menit)	4.5	0	3.7	8.2	2.73333
	L3 (50 menit)	0	5.6	4.9	10.5	3.5
	L4 (60 menit)	5.8	5.3	4.1	15.2	5.06667
K2 (75%)	L1 (30 menit)	3.8	4.4	4.1	12.3	4.1
	L2 (40 menit)	4.6	4.2	5.3	14.1	4.7
	L3 (50 menit)	4.8	5.1	4.3	14.2	4.73333
	L4 (60 menit)	4.5	5.1	3.9	13.5	4.5
K3 (85%)	L1 (30 menit)	4.3	3.7	4.2	12.2	4.06667
	L2 (40 menit)	5.6	5.3	4.8	6.2	2.06667
	L3 (50 menit)	6.2	4.9	6.8	17.9	5.96667
	L4 (60 menit)	5.9	5.5	7.2	18.6	6.2
K4 (95%)	L1 (30 menit)	4.8	5.1	6.2	16.1	5.36667
	L2 (40 menit)	7.9	4.8	5.6	18.3	6.1
	L3 (50 menit)	7.2	7.4	6.5	21.1	7.03333
	L4 (60 menit)	7.9	6.9	8.2	23	7.66667
TOTAL		81	73.3	83.4	237.7	79.2333

Lampiran 2 : Analisis Perhitungan

a) Laju Perkecambahan

1. Anava

Tests of Between-Subjects Effects

Dependent Variable:data

Source	Type III Sum of Squares	df	Mean Square	F	Sig.
Model	2877.662 ^a	15	191.844	74.038	.000
konsentrasi	635.852	3	211.951	81.798	.000
lama	1.218	3	.406	.157	.925
konsentrasi * lama	27.727	8	3.466	3.338	.020
Error	85.508	33	2.591		
Total	2963.170	48			

a. R Squared = .971 (Adjusted R Squared = .958)

2. Uji Duncan

a) Konsentrasi

data

Duncan

konsentrasi	N	Subset		
		1	2	3
4	12	3.208		
3	12	4.342		
2	15		7.207	
1	9			13.822
Sig.		.099	1.000	1.000

3. Anava Interaksi

Tests of Between-Subjects Effects

Dependent Variable:data

Source	Type III Sum of Squares	df	Mean Square	F	Sig.
Model	2954.703 ^a	16	184.669	697.961	.000
interaksi	2954.703	16	184.669	697.961	.000
Error	8.467	32	.265		
Total	2963.170	48			

a. R Squared = .997 (Adjusted R Squared = .996)

4. Uji Duncan Interaksi

Data

Duncan

interaksi	N	Subset							
		1	2	3	4	5	6	7	8
16	3	2.233							
15	3	3.000	3.000						
12	3		3.300	3.300					
13	3		3.633	3.633	3.633				
14	3			3.967	3.967				
10	3				4.500	4.500			
11	3				4.500	4.500			
8	3					5.000			
9	3					5.067			
7	3						6.233		
5	3						6.267		
6	3						6.367		
4	3							12.167	
3	3								13.633
2	3								13.833
1	3								14.000
Sig.		.077	.164	.143	.067	.228	.768	1.000	.418

b) Daya Berkecambah

1. Anava

Tests of Between-Subjects Effects

Dependent Variable:data

Source	Type III Sum of Squares	df	Mean Square	F	Sig.
Model	192693.333 ^a	16	12043.333	1.980E3	.000
konsentrasi	48787.333	3	16262.444	2.673E3	.000
lama	2004.667	3	668.222	109.845	.000
konsentrasi * lama	200.000	9	22.222	3.653	.003
Error	194.667	32	6.083		
Total	192888.000	48			

a. R Squared = ,999 (Adjusted R Squared = ,998)

2. UJI DUNCAN

a. Konsentrasi

Data

Duncan

konsent rasi	N	Subset			
		1	2	3	4
1	12	7.00			
2	12		43.67		
4	12			79.50	
3	12				87.17
Sig.		1.000	1.000	1.000	1.000

b. Lama perendaman

Data

Duncan

lama	N	Subset			
		1	2	3	4
1	12	46.17			
2	12		50.83		
3	12			57.00	
4	12				63.33
Sig.		1.000	1.000	1.000	1.000

3. Anava Interaksi

Tests of Between-Subjects Effects

Dependent Variable:data

Source	Type III Sum of Squares	df	Mean Square	F	Sig.
Model	192693.333 ^a	16	12043.333	1.980E3	.000
Interaksi	192693.333	16	12043.333	1.980E3	.000
Error	194.667	32	6.083		
Total	192888.000	48			

a. R Squared = ,999 (Adjusted R Squared = ,998)

4. Uji duncan

Interaksi	N	Subset									
		1	2	3	4	5	6	7	8	9	10
1	3	2.00									
2	3	3.33									
3	3	4.67									
4	3		18.00								
5	3			34.67							
6	3				40.00						
7	3					48.00					
8	3					52.00					
13	3						72.00				
9	3						76.00	76.00			
14	3							76.67			
15	3								82.00		
10	3								83.33	83.33	
16	3									87.33	
11	3										93.33
12	3										96.00
Sig.		.221	1.000	1.000	1.000	.056	.056	.743	.513	.056	.195

c) Panjang Hipokotil

1. Anava

Tests of Between-Subjects Effects

Dependent Variable:data

Source	Type III Sum of Squares	df	Mean Square	F	Sig.
Model	1269.697 ^a	15	84.646	49.727	.000
konsentrasi	60.412	3	20.137	11.830	.000
lama	18.759	3	6.253	3.673	.022
konsentrasi * lama	7.587	8	.948	2.557	.005
Error	56.173	33	1.702		
Total	1325.870	48			

a. R Squared = .958 (Adjusted R Squared = .938)

2. Uji Duncan
a) Konsentrasi Asam Sulfat

data

Duncan

konsentrasi	N	Subset		
		1	2	3
1	12	3.3917		
2	12		4.5083	
3	9		5.0889	
4	15			6.4733
Sig.		1.000	.291	1.000

- b) Lama Perendaman

data

Duncan

Lama	N	Subset		
		1	2	3
1	12	3.9500		
2	12	4.6917	4.6917	
3	12		5.3083	5.3083
4	12			5.8583
Sig.		.173	.255	.309

3. Anova Interaksi

Tests of Between-Subjects Effects

Dependent Variable:data

Source	Type III Sum of Squares	df	Mean Square	F	Sig.
Model	1277.693 ^a	16	79.856	53.042	.000
interaksi	1277.693	16	79.856	53.042	.000
Error	48.177	32	1.506		
Total	1325.870	48			

a. R Squared = .964 (Adjusted R Squared = .945)

4. Uji Duncan

data

Duncan

interaksi	N	Subset				
		1	2	3	4	5
1	3	2.2667				
2	3	2.7333	2.7333			
3	2	2.8000	2.8000			
9	3	3.9667	3.9667	3.9667		
5	3	4.1000	4.1000	4.1000		
6	3	4.3000	4.3000	4.3000		
8	3		4.6333	4.6333		
10	3		5.0333	5.0333	5.0333	
7	3		5.0667	5.0667	5.0667	
11	3			5.3000	5.3000	
4	3			5.3333	5.3333	
13	3			5.3667	5.3667	
14	3			6.1000	6.1000	6.1000
12	4			6.3500	6.3500	6.3500
15	3				7.0333	7.0333
16	3					7.6667
Sig.		.085	.053	.053	.097	.166

Lampiran 3 : Gambar Penelitian

Gambar 1. Alat yang digunakan dalam Penelitian



Gambar 2. Persiapan Larutan Asam Sulfat



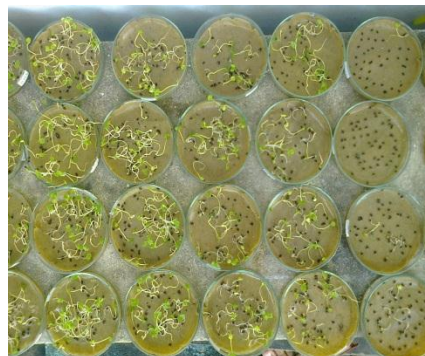
Gambar 3. Persiapan media



Gambar 4. Perendaman Biji Jati Belanda dalam larutan asam sulfat



Gambar 5. Penanaman biji pada diatas kertas merang



Gambar 6. Perkecambahan biji Jati Belanda pada hari ke-14



Gambar 6. Hasil kecambah biji Jati Belanda



Gambar 7. Hasil kecambah biji Jati Belanda