

LAMPIRAN

Lampiran 1: Kuesioner Penelitian

IDENTITAS

Nama Lengkap :

Kelas :

Petunjuk pengisian

1. Tulislah Nama lengkap dan Kelas anda .
2. Bacalah seluruh pernyataan dengan teliti.
3. Pilihlah salah satu alternatif jawaban yang paling sesuai dengan keadaan diri anda dan berilah tanda cek list (√).

CONTOH

| NO | PERNYATAAN | SS | S | TS | STS |
|----|--|----|---|----|-----|
| 1 | Penampilan yang baik itu penampilan yang sopan | √ | | | |

4. Kriteria pemilihan jawaban:

SS = Sangat Setuju.

S = Setuju.

TS = Tidak Setuju.

STS = Sangat Tidak Setuju.

5. Apabila anda mengalami kesalahan dalam memberikan jawaban, maka beri tanda garis sama dengan (=) pada jawaban sebelumnya kemudian beri tanda centang pada pernyataan anda yang baru.

CONTOH

| NO | PERNYATAAN | SS | S | TS | STS |
|----|--|----|---|----|-----|
| 1 | Penampilan yang baik itu penampilan yang sopan | ≠ | | √ | |

6. Usahakan tidak ada satupun pernyataan yang terlewatkan.
7. Angket ini tidak akan mempengaruhi nilai.

☺ ,, SELAMAT MENGERJAKAN ,, ☺

MOTIVASI BELAJAR

| NO | PERNYATAAN | SS | S | TS | STS |
|----|--|----|---|----|-----|
| 1 | Saya minta bantuan orang yang lebih pintar apabila saya belum mampu mengerjakannya | | | | |
| 2 | Saya harus menjadi juara kelas agar orangtua saya memuji saya | | | | |
| 3 | Saya berusaha untuk menyelesaikan tugas yang sulit | | | | |
| 4 | Saya ingin dipuji orang lain karena prestasi saya | | | | |
| 5 | Saya memperhatikan setiap penjelasan dari guru | | | | |
| 6 | Saya mendapatkan pujian dari orangtua jika saya mendapatkan nilai bagus | | | | |
| 7 | Saya ingin menjadi juara kelas | | | | |
| 8 | Saya harus lebih pintar dari orang lain | | | | |
| 9 | Saya berusaha mendapatkan nilai bagus | | | | |
| 10 | Saya yakin dapat mengerjakan tugas lebih baik dari orang lain | | | | |
| 11 | Saya malas mengerjakan tugas yang sulit | | | | |
| 12 | Saya tidak ingin dipuji oleh orang lain | | | | |
| 13 | Saya akan terus berusaha menjadi yang terbaik | | | | |
| 14 | Saya tidak rela jika temen-teman saya lebih baik dari saya | | | | |
| 15 | Saya tidak peduli dengan hasil yang saya kerjakan | | | | |
| 16 | Saya tidak peduli meskipun teman-teman saya lebih baik dari saya | | | | |
| 17 | Saya malu jika bolos sekolah | | | | |
| 18 | Saya ingin mendapatkan hadiah karena prestasi saya | | | | |
| 19 | Saya tidak ingin menjadi juara kelas | | | | |

| | | | | | |
|-----------|--|--|--|--|--|
| 20 | Saya tidak ingin bersaing dengan siapapun | | | | |
| 21 | Saya berangkat ke Sekolah tepat waktu | | | | |
| 22 | Saya ingin dihargai karena prestasi saya | | | | |
| 23 | Saya malu apabila saya datang ke Sekolah tepat waktu | | | | |
| 24 | Saya tidak suka hadiah | | | | |

Petunjuk pengisian

Dibawah ini terdapat beberapa pernyataan, disini anda diminta untuk memberikan respon atau jawaban yang sesuai dengan apa yang biasa orangtua anda lakukan dengan memberikan tanda cek (√) pada kolom jawaban yang tersedia. Setiap pernyataan hanya ada satu jawaban yang harus dipilih yang paling sesuai, diantaranya:

SS = Sangat Sering.

S = Sering.

J = Jarang.

TP = Tidak Pernah.

Jawaban-jawaban anda tidak ada yang benar dan salah, akan tetapi jawaban yang benar adalah yang sesuai dengan apa yang biasa orangtua anda lakukan.

☺,,, SELAMAT MENGERJAKAN,,, ☺

DUKUNGAN ORANGTUA

| NO | PERNYATAAN | SS | S | J | TP |
|----|---|----|---|---|----|
| 1 | Orangtua saya menanyakan tugas-tugas apa saja yang diberikan di Sekolah | | | | |
| 2 | Orangtua saya membelikan alat tulis menulis untuk saya | | | | |
| 3 | Saya tidak diijinkan bermain bila PR saya belum selesai | | | | |
| 4 | Orangtua saya membelikan buku penunjang pelajaran untuk saya | | | | |
| 5 | Orangtua selalu mengingatkan tugas-tugas saya | | | | |
| 6 | Apabila buku pelajaran saya habis, orangtua saya membelikannya lagi | | | | |
| 7 | Orangtua saya mengajarkan cara belajar yang benar | | | | |
| 8 | Orangtua saya menyediakan semua peralatan belajar saya | | | | |
| 9 | Orangtua saya menasehati saya supaya rajin belajar | | | | |
| 10 | Orangtua saya menyediakan tempat belajar saat saya hendak belajar | | | | |
| 11 | Orangtua tidak pernah menanyakan tugas dari Sekolah | | | | |
| 12 | Orangtua saya tidak membelikan perlengkapan belajar untuk saya | | | | |
| 13 | Orangtua saya membimbing saya pada saat belajar | | | | |
| 14 | Di rumah saya dapat belajar dengan tenang | | | | |
| 15 | Orangtua saya tidak pernah menasehati saya untuk rajin | | | | |

| | | | | | |
|----|---|--|--|--|--|
| | belajar | | | | |
| 16 | Di rumah tidak ada tempat untuk belajar | | | | |
| 17 | Orangtua saya mendampingi saya pada saat belajar | | | | |
| 18 | Orangtua memberikan waktu kepada saya untuk belajar di rumah | | | | |
| 19 | Orangtua saya lebih mengutamakan pekerjaannya daripada mendampingi saya belajar | | | | |
| 20 | Orangtua saya tidak menyediakan tempat untuk belajar | | | | |
| 21 | Orangtua meminta saya belajar ketika waktu belajar tiba | | | | |
| 22 | Orangtua saya menentukan kapan saya harus belajar | | | | |
| 23 | Orangtua saya tidak marah meskipun saya tidak belajar | | | | |
| 24 | Orangtua tidak memberi kesempatan kepada saya untuk belajar di rumah | | | | |

Mohon diteliti kembali jangan sampai ada yang terlewatkan

Atas partisipasi anda, kami ucapkan

☺,,, TERIMA KASIH,,, ☺

Lampiran 2:

Data Kasar Motivasi Belajar (Y)

| X/Y | 1 | 2 | 3 | 4 | 5 | 6 | 7 | 8 | 9 | 10 | 11 | 12 | 13 | 14 | 15 | 16 | 17 | 18 | 19 | 20 | 21 | 22 | 23 | 24 | jml |
|-----|---|---|---|---|---|---|---|---|---|----|----|----|----|----|----|----|----|----|----|----|----|----|----|----|-----|
| 1 | 3 | 3 | 3 | 4 | 3 | 3 | 4 | 3 | 4 | 3 | 2 | 1 | 3 | 2 | 3 | 3 | 2 | 4 | 2 | 3 | 4 | 4 | 3 | 2 | 71 |
| 2 | 4 | 2 | 4 | 1 | 4 | 4 | 4 | 3 | 3 | 4 | 2 | 3 | 4 | 1 | 2 | 2 | 2 | 3 | 1 | 2 | 4 | 3 | 4 | 3 | 69 |
| 3 | 4 | 4 | 4 | 4 | 4 | 3 | 4 | 4 | 4 | 1 | 2 | 4 | 4 | 1 | 4 | 1 | 4 | 4 | 1 | 4 | 4 | 4 | 4 | 4 | 81 |
| 4 | 2 | 3 | 1 | 3 | 1 | 2 | 3 | 2 | 1 | 3 | 3 | 2 | 2 | 1 | 2 | 3 | 1 | 3 | 2 | 4 | 3 | 2 | 1 | 3 | 53 |
| 5 | 3 | 3 | 3 | 3 | 3 | 3 | 3 | 3 | 3 | 3 | 3 | 2 | 3 | 2 | 1 | 3 | 2 | 3 | 3 | 3 | 3 | 3 | 3 | 3 | 67 |
| 6 | 4 | 4 | 3 | 4 | 4 | 4 | 3 | 1 | 4 | 4 | 4 | 1 | 4 | 1 | 4 | 4 | 1 | 4 | 4 | 4 | 4 | 4 | 4 | 4 | 82 |
| 7 | 3 | 2 | 3 | 2 | 3 | 3 | 3 | 3 | 3 | 2 | 3 | 2 | 3 | 2 | 3 | 3 | 2 | 3 | 2 | 2 | 3 | 3 | 3 | 3 | 64 |
| 8 | 3 | 2 | 3 | 2 | 3 | 3 | 3 | 3 | 3 | 2 | 3 | 2 | 3 | 2 | 2 | 3 | 3 | 3 | 3 | 3 | 2 | 3 | 3 | 3 | 65 |
| 9 | 4 | 3 | 4 | 4 | 4 | 4 | 3 | 3 | 3 | 3 | 2 | 3 | 4 | 3 | 2 | 2 | 3 | 3 | 1 | 1 | 4 | 4 | 4 | 1 | 72 |
| 10 | 3 | 3 | 3 | 3 | 3 | 3 | 3 | 3 | 3 | 2 | 3 | 4 | 3 | 2 | 3 | 3 | 2 | 3 | 3 | 3 | 3 | 3 | 2 | 3 | 69 |
| 11 | 4 | 3 | 4 | 2 | 4 | 4 | 4 | 4 | 4 | 4 | 2 | 3 | 4 | 1 | 4 | 1 | 4 | 4 | 3 | 3 | 4 | 4 | 3 | 3 | 80 |
| 12 | 4 | 4 | 4 | 4 | 4 | 4 | 4 | 4 | 4 | 4 | 1 | 1 | 4 | 2 | 1 | 3 | 2 | 4 | 1 | 3 | 4 | 4 | 4 | 3 | 77 |
| 13 | 4 | 1 | 4 | 1 | 3 | 1 | 4 | 4 | 4 | 4 | 2 | 1 | 4 | 1 | 4 | 4 | 1 | 4 | 1 | 4 | 4 | 4 | 4 | 1 | 69 |
| 14 | 4 | 2 | 4 | 1 | 4 | 2 | 4 | 4 | 4 | 4 | 4 | 2 | 4 | 1 | 4 | 4 | 3 | 4 | 3 | 4 | 4 | 4 | 3 | 2 | 79 |
| 15 | 3 | 4 | 3 | 2 | 4 | 3 | 4 | 4 | 4 | 3 | 3 | 2 | 4 | 2 | 3 | 3 | 3 | 4 | 3 | 3 | 4 | 4 | 4 | 3 | 79 |
| 16 | 3 | 3 | 3 | 2 | 3 | 3 | 4 | 3 | 4 | 3 | 3 | 2 | 3 | 2 | 3 | 3 | 3 | 3 | 2 | 3 | 3 | 3 | 2 | 3 | 69 |
| 17 | 4 | 4 | 4 | 3 | 4 | 4 | 4 | 3 | 4 | 3 | 1 | 2 | 4 | 3 | 3 | 3 | 2 | 3 | 2 | 3 | 4 | 4 | 3 | 3 | 77 |
| 18 | 3 | 4 | 3 | 1 | 4 | 3 | 4 | 4 | 4 | 3 | 4 | 1 | 4 | 1 | 4 | 4 | 2 | 4 | 2 | 4 | 4 | 4 | 3 | 4 | 78 |
| 19 | 4 | 3 | 4 | 3 | 4 | 4 | 4 | 3 | 4 | 3 | 3 | 3 | 3 | 3 | 3 | 3 | 2 | 4 | 1 | 3 | 4 | 4 | 4 | 3 | 79 |
| 20 | 4 | 4 | 4 | 4 | 4 | 4 | 4 | 4 | 4 | 4 | 2 | 1 | 4 | 3 | 2 | 2 | 3 | 4 | 1 | 3 | 4 | 4 | 4 | 2 | 79 |

| | | | | | | | | | | | | | | | | | | | | | | | | | | | | | | |
|----|---|---|---|---|---|---|---|---|---|---|---|---|---|---|---|---|---|---|---|---|---|---|---|---|---|---|---|---|----|----|
| 21 | 4 | 4 | 4 | 4 | 4 | 4 | 4 | 4 | 4 | 3 | 3 | 3 | 2 | 2 | 3 | 1 | 2 | 4 | 2 | 4 | 4 | 4 | 4 | 4 | 4 | 4 | 3 | 4 | 4 | 80 |
| 22 | 3 | 4 | 3 | 3 | 3 | 3 | 3 | 3 | 4 | 3 | 4 | 2 | 2 | 1 | 2 | 1 | 3 | 4 | 4 | 4 | 3 | 1 | 3 | 4 | 4 | 3 | 3 | 4 | 3 | 74 |
| 23 | 4 | 4 | 4 | 4 | 4 | 4 | 4 | 4 | 4 | 3 | 4 | 1 | 1 | 3 | 1 | 2 | 2 | 4 | 3 | 4 | 4 | 2 | 4 | 4 | 4 | 4 | 4 | 4 | 4 | 82 |
| 24 | 3 | 3 | 4 | 4 | 4 | 4 | 4 | 4 | 4 | 4 | 3 | 2 | 2 | 4 | 1 | 3 | 1 | 2 | 1 | 2 | 4 | 1 | 3 | 4 | 4 | 3 | 2 | 3 | 73 | |
| 25 | 4 | 3 | 4 | 2 | 3 | 3 | 4 | 4 | 4 | 3 | 1 | 2 | 2 | 2 | 2 | 2 | 3 | 1 | 3 | 4 | 3 | 2 | 4 | 4 | 3 | 2 | 1 | 4 | 65 | |
| 26 | 4 | 3 | 4 | 3 | 4 | 3 | 4 | 3 | 3 | 3 | 3 | 3 | 3 | 4 | 3 | 3 | 3 | 2 | 2 | 4 | 4 | 4 | 4 | 4 | 4 | 4 | 4 | 4 | 83 | |
| 27 | 4 | 2 | 4 | 4 | 4 | 4 | 3 | 3 | 4 | 1 | 4 | 3 | 4 | 4 | 1 | 3 | 4 | 1 | 2 | 4 | 4 | 4 | 4 | 4 | 4 | 4 | 4 | 4 | 79 | |
| 28 | 3 | 3 | 4 | 3 | 3 | 3 | 3 | 3 | 3 | 4 | 2 | 3 | 3 | 2 | 3 | 2 | 4 | 3 | 1 | 3 | 4 | 4 | 3 | 3 | 3 | 3 | 3 | 4 | 74 | |
| 29 | 3 | 2 | 3 | 2 | 3 | 3 | 3 | 3 | 3 | 3 | 3 | 1 | 3 | 3 | 3 | 3 | 2 | 2 | 2 | 4 | 4 | 3 | 3 | 3 | 2 | 2 | 3 | 3 | 67 | |
| 30 | 3 | 2 | 3 | 2 | 3 | 3 | 3 | 3 | 4 | 4 | 4 | 1 | 2 | 4 | 2 | 4 | 4 | 1 | 4 | 4 | 4 | 3 | 3 | 3 | 3 | 4 | 1 | 4 | 72 | |
| 31 | 4 | 4 | 4 | 4 | 4 | 4 | 4 | 4 | 4 | 3 | 4 | 1 | 3 | 3 | 3 | 4 | 2 | 4 | 4 | 4 | 2 | 3 | 3 | 3 | 1 | 4 | 2 | 4 | 78 | |
| 32 | 4 | 4 | 4 | 4 | 2 | 4 | 4 | 4 | 4 | 2 | 3 | 3 | 4 | 2 | 3 | 3 | 2 | 4 | 1 | 3 | 4 | 1 | 3 | 4 | 4 | 4 | 3 | 4 | 79 | |
| 33 | 2 | 4 | 4 | 3 | 4 | 4 | 4 | 4 | 4 | 4 | 4 | 4 | 2 | 1 | 4 | 4 | 1 | 4 | 1 | 4 | 1 | 4 | 4 | 4 | 4 | 4 | 1 | 4 | 79 | |
| 34 | 3 | 3 | 4 | 4 | 4 | 3 | 4 | 4 | 4 | 1 | 1 | 2 | 4 | 3 | 1 | 2 | 4 | 2 | 4 | 2 | 4 | 1 | 3 | 4 | 4 | 2 | 1 | 4 | 68 | |
| 35 | 4 | 2 | 4 | 2 | 4 | 3 | 4 | 3 | 4 | 3 | 3 | 3 | 1 | 1 | 4 | 3 | 1 | 4 | 3 | 1 | 4 | 1 | 2 | 4 | 4 | 3 | 4 | 4 | 71 | |
| 36 | 4 | 2 | 4 | 2 | 3 | 3 | 3 | 3 | 4 | 3 | 3 | 3 | 2 | 2 | 4 | 3 | 4 | 3 | 4 | 4 | 4 | 2 | 4 | 4 | 4 | 3 | 4 | 4 | 77 | |
| 37 | 4 | 3 | 4 | 1 | 4 | 2 | 3 | 4 | 3 | 3 | 3 | 4 | 4 | 3 | 4 | 3 | 4 | 3 | 4 | 4 | 4 | 4 | 2 | 4 | 4 | 1 | 3 | 4 | 78 | |
| 38 | 3 | 3 | 3 | 3 | 4 | 4 | 3 | 3 | 3 | 4 | 3 | 3 | 3 | 1 | 3 | 3 | 3 | 3 | 3 | 3 | 3 | 4 | 2 | 4 | 3 | 3 | 3 | 4 | 75 | |
| 39 | 3 | 3 | 3 | 3 | 2 | 3 | 4 | 4 | 4 | 3 | 3 | 1 | 4 | 1 | 4 | 3 | 3 | 3 | 3 | 3 | 4 | 2 | 4 | 4 | 4 | 3 | 3 | 3 | 73 | |
| 40 | 3 | 3 | 3 | 3 | 3 | 3 | 3 | 3 | 4 | 3 | 3 | 3 | 3 | 2 | 3 | 3 | 2 | 2 | 2 | 3 | 2 | 3 | 2 | 4 | 3 | 2 | 2 | 3 | 69 | |
| 41 | 4 | 4 | 3 | 2 | 3 | 4 | 4 | 3 | 3 | 3 | 3 | 3 | 3 | 2 | 3 | 3 | 2 | 4 | 3 | 2 | 4 | 2 | 4 | 4 | 3 | 3 | 3 | 3 | 76 | |
| 42 | 4 | 2 | 4 | 3 | 4 | 4 | 4 | 4 | 3 | 4 | 2 | 1 | 4 | 2 | 4 | 3 | 3 | 3 | 3 | 3 | 2 | 3 | 3 | 4 | 4 | 4 | 4 | 2 | 76 | |
| 43 | 3 | 4 | 2 | 2 | 4 | 3 | 3 | 4 | 3 | 4 | 2 | 3 | 2 | 2 | 3 | 2 | 4 | 3 | 3 | 2 | 3 | 2 | 3 | 4 | 4 | 3 | 3 | 3 | 71 | |
| 44 | 4 | 1 | 4 | 1 | 4 | 3 | 4 | 4 | 4 | 3 | 4 | 2 | 4 | 1 | 3 | 4 | 4 | 4 | 4 | 3 | 4 | 2 | 4 | 4 | 4 | 3 | 3 | 3 | 77 | |
| 45 | 4 | 1 | 4 | 1 | 4 | 3 | 3 | 4 | 4 | 3 | 3 | 2 | 4 | 1 | 1 | 2 | 2 | 2 | 4 | 2 | 4 | 2 | 3 | 4 | 3 | 4 | 3 | 3 | 68 | |

| | | | | | | | | | | | | | | | | | | | | | | | | | | | |
|----|---|---|---|---|---|---|---|---|---|---|---|---|---|---|---|---|---|---|---|---|---|---|---|---|---|---|----|
| 46 | 4 | 4 | 3 | 4 | 1 | 4 | 4 | 4 | 4 | 4 | 1 | 4 | 4 | 3 | 4 | 4 | 1 | 3 | 4 | 4 | 4 | 2 | 4 | 4 | 3 | 2 | 79 |
| 47 | 4 | 4 | 3 | 4 | 1 | 4 | 4 | 4 | 4 | 4 | 1 | 4 | 4 | 3 | 4 | 4 | 1 | 3 | 4 | 4 | 4 | 2 | 4 | 4 | 3 | 2 | 79 |
| 48 | 3 | 3 | 3 | 3 | 3 | 3 | 2 | 3 | 3 | 3 | 2 | 3 | 2 | 3 | 3 | 3 | 2 | 3 | 2 | 3 | 3 | 3 | 3 | 3 | 2 | 3 | 66 |
| 49 | 2 | 2 | 3 | 3 | 3 | 3 | 3 | 3 | 3 | 3 | 2 | 4 | 4 | 3 | 4 | 2 | 3 | 4 | 3 | 3 | 3 | 2 | 3 | 3 | 3 | 2 | 67 |
| 50 | 3 | 3 | 3 | 3 | 2 | 3 | 3 | 3 | 3 | 3 | 2 | 3 | 3 | 2 | 3 | 3 | 3 | 3 | 3 | 3 | 3 | 2 | 3 | 3 | 3 | 2 | 67 |
| 51 | 4 | 2 | 4 | 2 | 4 | 3 | 4 | 4 | 4 | 2 | 4 | 2 | 4 | 2 | 2 | 4 | 4 | 2 | 4 | 4 | 4 | 2 | 4 | 4 | 2 | 1 | 74 |
| 52 | 4 | 2 | 4 | 2 | 4 | 4 | 2 | 4 | 4 | 4 | 2 | 4 | 4 | 2 | 2 | 4 | 4 | 2 | 4 | 4 | 4 | 2 | 4 | 4 | 2 | 1 | 75 |
| 53 | 4 | 4 | 3 | 3 | 1 | 4 | 3 | 4 | 4 | 4 | 4 | 4 | 4 | 1 | 4 | 4 | 4 | 4 | 1 | 4 | 4 | 2 | 4 | 4 | 4 | 4 | 78 |
| 54 | 3 | 4 | 3 | 3 | 2 | 3 | 3 | 4 | 3 | 4 | 3 | 3 | 3 | 3 | 3 | 2 | 4 | 2 | 4 | 4 | 4 | 2 | 3 | 4 | 4 | 2 | 75 |
| 55 | 4 | 2 | 4 | 2 | 4 | 4 | 4 | 4 | 3 | 4 | 2 | 3 | 3 | 2 | 4 | 3 | 2 | 2 | 4 | 3 | 3 | 2 | 4 | 4 | 2 | 2 | 73 |
| 56 | 3 | 3 | 3 | 3 | 1 | 4 | 3 | 4 | 4 | 2 | 3 | 3 | 3 | 3 | 4 | 2 | 4 | 4 | 2 | 3 | 2 | 3 | 3 | 3 | 3 | 3 | 71 |
| 57 | 4 | 3 | 4 | 3 | 4 | 4 | 4 | 4 | 4 | 3 | 4 | 4 | 4 | 4 | 4 | 3 | 4 | 1 | 4 | 3 | 4 | 2 | 4 | 4 | 3 | 4 | 85 |
| 58 | 3 | 3 | 3 | 2 | 3 | 3 | 4 | 2 | 3 | 2 | 3 | 2 | 3 | 2 | 3 | 2 | 3 | 3 | 2 | 3 | 2 | 2 | 3 | 3 | 3 | 3 | 65 |
| 59 | 3 | 3 | 3 | 2 | 3 | 3 | 4 | 4 | 3 | 4 | 3 | 4 | 3 | 3 | 1 | 3 | 4 | 2 | 4 | 3 | 4 | 2 | 4 | 4 | 3 | 3 | 75 |
| 60 | 4 | 3 | 4 | 2 | 4 | 3 | 4 | 4 | 4 | 1 | 4 | 4 | 4 | 3 | 4 | 3 | 4 | 3 | 4 | 4 | 3 | 2 | 4 | 4 | 2 | 4 | 81 |
| 61 | 4 | 4 | 4 | 3 | 4 | 4 | 3 | 4 | 4 | 3 | 4 | 2 | 3 | 2 | 3 | 3 | 3 | 3 | 3 | 3 | 3 | 3 | 4 | 4 | 3 | 4 | 81 |
| 62 | 3 | 3 | 4 | 2 | 4 | 2 | 3 | 3 | 3 | 3 | 4 | 3 | 4 | 3 | 4 | 3 | 4 | 4 | 3 | 4 | 3 | 2 | 4 | 4 | 2 | 3 | 76 |
| 63 | 4 | 2 | 3 | 2 | 3 | 2 | 4 | 3 | 4 | 2 | 3 | 3 | 3 | 3 | 4 | 3 | 4 | 4 | 4 | 3 | 4 | 4 | 3 | 4 | 2 | 4 | 75 |
| 64 | 4 | 3 | 4 | 3 | 4 | 3 | 4 | 4 | 4 | 4 | 4 | 4 | 4 | 3 | 2 | 4 | 4 | 1 | 2 | 4 | 4 | 2 | 4 | 4 | 3 | 2 | 79 |
| 65 | 4 | 2 | 4 | 2 | 4 | 4 | 3 | 4 | 4 | 4 | 4 | 4 | 4 | 2 | 4 | 4 | 4 | 4 | 4 | 4 | 3 | 4 | 4 | 4 | 4 | 4 | 83 |
| 66 | 4 | 2 | 4 | 4 | 4 | 4 | 3 | 4 | 4 | 4 | 3 | 3 | 4 | 3 | 2 | 4 | 3 | 3 | 4 | 4 | 3 | 3 | 4 | 4 | 2 | 3 | 80 |
| 67 | 3 | 3 | 4 | 3 | 3 | 3 | 4 | 3 | 3 | 3 | 4 | 1 | 2 | 3 | 2 | 3 | 2 | 3 | 3 | 3 | 2 | 3 | 3 | 3 | 3 | 4 | 71 |
| 68 | 3 | 3 | 3 | 2 | 3 | 4 | 4 | 3 | 4 | 3 | 3 | 3 | 3 | 4 | 3 | 1 | 4 | 4 | 4 | 3 | 3 | 3 | 4 | 4 | 3 | 3 | 76 |
| 69 | 3 | 3 | 3 | 2 | 3 | 4 | 4 | 4 | 3 | 4 | 3 | 3 | 3 | 4 | 3 | 1 | 4 | 4 | 4 | 3 | 3 | 3 | 4 | 4 | 3 | 3 | 76 |
| 70 | 3 | 3 | 3 | 2 | 4 | 4 | 4 | 3 | 4 | 3 | 3 | 3 | 4 | 3 | 3 | 1 | 4 | 1 | 4 | 3 | 3 | 3 | 4 | 4 | 3 | 3 | 74 |

| | | | | | | | | | | | | | | | | | | | | | | | | | |
|----|---|---|---|---|---|---|---|---|---|---|---|---|---|---|---|---|---|---|---|---|---|---|---|---|----|
| 71 | 3 | 2 | 4 | 2 | 3 | 2 | 4 | 4 | 3 | 4 | 4 | 4 | 4 | 4 | 4 | 3 | 1 | 3 | 1 | 1 | 4 | 4 | 2 | 4 | 71 |
| 72 | 4 | 2 | 4 | 2 | 4 | 2 | 4 | 4 | 4 | 3 | 4 | 1 | 4 | 4 | 3 | 1 | 3 | 3 | 3 | 3 | 4 | 4 | 2 | 3 | 74 |
| 73 | 4 | 2 | 4 | 2 | 3 | 2 | 4 | 4 | 3 | 4 | 4 | 1 | 4 | 4 | 4 | 3 | 4 | 4 | 4 | 1 | 4 | 4 | 2 | 1 | 75 |
| 74 | 4 | 3 | 4 | 3 | 4 | 4 | 4 | 4 | 3 | 2 | 4 | 2 | 3 | 4 | 4 | 4 | 3 | 4 | 4 | 3 | 3 | 4 | 3 | 4 | 83 |
| 75 | 4 | 3 | 4 | 3 | 4 | 4 | 4 | 4 | 4 | 3 | 2 | 2 | 4 | 3 | 3 | 3 | 4 | 3 | 4 | 4 | 3 | 3 | 3 | 3 | 79 |
| 76 | 4 | 3 | 4 | 3 | 4 | 4 | 4 | 3 | 4 | 4 | 3 | 2 | 4 | 4 | 4 | 4 | 4 | 4 | 4 | 2 | 4 | 4 | 3 | 4 | 86 |
| 77 | 3 | 4 | 4 | 3 | 4 | 4 | 4 | 4 | 3 | 3 | 4 | 2 | 3 | 4 | 4 | 1 | 4 | 4 | 4 | 4 | 4 | 4 | 4 | 4 | 85 |
| 78 | 4 | 4 | 4 | 3 | 4 | 4 | 4 | 4 | 4 | 3 | 4 | 4 | 3 | 3 | 3 | 3 | 4 | 4 | 1 | 3 | 4 | 4 | 4 | 3 | 84 |

Data Motivasi Belajar Setelah Gugur

| X/Y | 1 | 2 | 3 | 5 | 6 | 7 | 8 | 9 | 11 | 13 | 15 | 17 | 18 | 20 | 21 | 22 | 23 | 24 | jml |
|-----|---|---|---|---|---|---|---|---|----|----|----|----|----|----|----|----|----|----|-----|
| 1 | 3 | 3 | 3 | 3 | 3 | 4 | 3 | 4 | 2 | 3 | 3 | 2 | 4 | 3 | 4 | 4 | 3 | 2 | 56 |
| 2 | 4 | 2 | 4 | 4 | 4 | 4 | 3 | 3 | 2 | 4 | 2 | 2 | 3 | 2 | 4 | 3 | 4 | 3 | 57 |
| 3 | 4 | 4 | 4 | 4 | 3 | 4 | 4 | 4 | 2 | 4 | 4 | 4 | 4 | 4 | 4 | 4 | 4 | 4 | 69 |
| 4 | 2 | 3 | 1 | 1 | 2 | 3 | 2 | 1 | 3 | 2 | 2 | 1 | 3 | 4 | 3 | 2 | 1 | 3 | 39 |
| 5 | 3 | 3 | 3 | 3 | 3 | 3 | 3 | 3 | 3 | 3 | 1 | 2 | 3 | 3 | 3 | 3 | 3 | 3 | 51 |
| 6 | 4 | 4 | 3 | 4 | 4 | 3 | 1 | 4 | 4 | 4 | 4 | 1 | 4 | 4 | 4 | 4 | 4 | 4 | 64 |
| 7 | 3 | 2 | 3 | 3 | 3 | 3 | 3 | 3 | 3 | 3 | 3 | 2 | 3 | 2 | 3 | 3 | 3 | 3 | 51 |
| 8 | 3 | 2 | 3 | 3 | 3 | 3 | 3 | 3 | 3 | 3 | 2 | 3 | 3 | 2 | 3 | 3 | 3 | 3 | 51 |
| 9 | 4 | 3 | 4 | 4 | 4 | 3 | 3 | 3 | 2 | 4 | 2 | 3 | 3 | 1 | 4 | 4 | 4 | 1 | 56 |
| 10 | 3 | 3 | 3 | 3 | 3 | 3 | 3 | 3 | 3 | 3 | 3 | 2 | 3 | 3 | 3 | 3 | 2 | 3 | 52 |
| 11 | 4 | 3 | 4 | 4 | 4 | 4 | 4 | 4 | 2 | 4 | 4 | 4 | 4 | 3 | 4 | 4 | 3 | 3 | 66 |
| 12 | 4 | 4 | 4 | 4 | 4 | 4 | 4 | 4 | 1 | 4 | 1 | 2 | 4 | 3 | 4 | 4 | 4 | 3 | 62 |
| 13 | 4 | 1 | 4 | 3 | 1 | 4 | 4 | 4 | 2 | 4 | 4 | 1 | 4 | 4 | 4 | 4 | 4 | 1 | 57 |
| 14 | 4 | 2 | 4 | 4 | 2 | 4 | 4 | 4 | 4 | 4 | 4 | 3 | 4 | 4 | 4 | 4 | 3 | 2 | 64 |
| 15 | 3 | 4 | 3 | 4 | 3 | 4 | 4 | 4 | 3 | 4 | 3 | 3 | 4 | 3 | 4 | 4 | 4 | 3 | 64 |
| 16 | 3 | 3 | 3 | 3 | 3 | 4 | 3 | 4 | 3 | 3 | 3 | 3 | 3 | 3 | 3 | 3 | 2 | 3 | 55 |

| | | | | | | | | | | | | | | | | | | | | | | | | | | |
|----|---|---|---|---|---|---|---|---|---|---|---|---|---|---|---|---|---|---|---|---|---|---|---|---|---|----|
| 17 | 4 | 4 | 4 | 4 | 4 | 4 | 4 | 4 | 4 | 4 | 4 | 4 | 1 | 4 | 3 | 2 | 3 | 4 | 3 | 4 | 4 | 4 | 4 | 3 | 3 | 61 |
| 18 | 3 | 4 | 4 | 3 | 4 | 4 | 4 | 3 | 4 | 4 | 4 | 4 | 4 | 4 | 4 | 2 | 4 | 4 | 3 | 4 | 4 | 4 | 4 | 3 | 4 | 66 |
| 19 | 4 | 3 | 4 | 4 | 4 | 4 | 4 | 4 | 4 | 4 | 4 | 4 | 3 | 3 | 2 | 2 | 4 | 3 | 4 | 3 | 4 | 4 | 4 | 4 | 3 | 63 |
| 20 | 4 | 4 | 4 | 4 | 4 | 4 | 4 | 4 | 4 | 4 | 4 | 4 | 2 | 4 | 2 | 3 | 4 | 3 | 4 | 2 | 4 | 4 | 4 | 4 | 2 | 64 |
| 21 | 4 | 4 | 4 | 4 | 4 | 4 | 4 | 4 | 4 | 3 | 4 | 3 | 3 | 2 | 2 | 4 | 4 | 4 | 3 | 4 | 4 | 4 | 4 | 3 | 4 | 62 |
| 22 | 3 | 3 | 4 | 4 | 3 | 4 | 3 | 3 | 4 | 3 | 4 | 4 | 4 | 2 | 3 | 4 | 3 | 3 | 3 | 4 | 4 | 4 | 4 | 3 | 4 | 60 |
| 23 | 4 | 4 | 4 | 4 | 4 | 4 | 4 | 4 | 4 | 4 | 4 | 4 | 4 | 3 | 2 | 3 | 4 | 4 | 4 | 4 | 4 | 4 | 4 | 4 | 4 | 67 |
| 24 | 3 | 3 | 4 | 4 | 4 | 4 | 4 | 4 | 4 | 4 | 4 | 4 | 3 | 4 | 2 | 2 | 4 | 3 | 4 | 3 | 4 | 4 | 4 | 3 | 2 | 61 |
| 25 | 4 | 3 | 4 | 3 | 4 | 3 | 4 | 3 | 4 | 4 | 4 | 4 | 1 | 2 | 1 | 4 | 4 | 2 | 2 | 4 | 3 | 4 | 4 | 2 | 1 | 50 |
| 26 | 4 | 3 | 4 | 4 | 4 | 4 | 4 | 4 | 4 | 4 | 4 | 4 | 3 | 4 | 2 | 4 | 4 | 4 | 4 | 4 | 4 | 4 | 4 | 4 | 4 | 64 |
| 27 | 4 | 2 | 4 | 4 | 4 | 4 | 4 | 4 | 4 | 3 | 4 | 4 | 4 | 4 | 1 | 2 | 4 | 4 | 4 | 4 | 4 | 4 | 4 | 4 | 4 | 62 |
| 28 | 3 | 3 | 3 | 3 | 3 | 3 | 3 | 3 | 3 | 3 | 3 | 2 | 2 | 3 | 1 | 3 | 4 | 4 | 3 | 3 | 3 | 3 | 3 | 3 | 4 | 54 |
| 29 | 3 | 2 | 3 | 3 | 3 | 3 | 3 | 3 | 3 | 3 | 3 | 3 | 3 | 3 | 2 | 4 | 3 | 4 | 2 | 3 | 3 | 3 | 3 | 2 | 3 | 52 |
| 30 | 3 | 2 | 3 | 3 | 3 | 3 | 3 | 3 | 3 | 3 | 4 | 4 | 4 | 2 | 1 | 4 | 4 | 3 | 4 | 3 | 3 | 3 | 3 | 4 | 1 | 53 |
| 31 | 4 | 4 | 4 | 4 | 4 | 4 | 4 | 4 | 4 | 4 | 4 | 4 | 4 | 3 | 4 | 4 | 4 | 3 | 3 | 4 | 1 | 4 | 4 | 4 | 2 | 63 |
| 32 | 4 | 4 | 4 | 4 | 4 | 2 | 4 | 4 | 4 | 4 | 4 | 4 | 3 | 4 | 2 | 4 | 4 | 3 | 4 | 4 | 4 | 4 | 4 | 4 | 3 | 64 |
| 33 | 2 | 4 | 4 | 4 | 4 | 4 | 4 | 4 | 4 | 4 | 4 | 4 | 4 | 2 | 1 | 4 | 4 | 4 | 4 | 4 | 4 | 4 | 4 | 4 | 1 | 62 |
| 34 | 3 | 3 | 4 | 4 | 4 | 3 | 4 | 4 | 4 | 4 | 4 | 4 | 1 | 4 | 4 | 2 | 1 | 3 | 4 | 2 | 4 | 4 | 4 | 2 | 1 | 52 |

| | | | | | | | | | | | | | | | | | | | | | | | |
|----|---|---|---|---|---|---|---|---|---|---|---|---|---|---|---|---|---|---|---|---|---|---|----|
| 35 | 4 | 4 | 2 | 4 | 4 | 4 | 3 | 4 | 4 | 3 | 4 | 3 | 1 | 4 | 1 | 4 | 2 | 4 | 4 | 4 | 3 | 4 | 58 |
| 36 | 4 | 4 | 2 | 4 | 3 | 3 | 3 | 4 | 4 | 3 | 4 | 4 | 2 | 4 | 4 | 4 | 2 | 4 | 4 | 4 | 3 | 4 | 60 |
| 37 | 4 | 4 | 3 | 4 | 4 | 2 | 3 | 4 | 3 | 3 | 4 | 4 | 4 | 4 | 4 | 2 | 2 | 4 | 4 | 4 | 1 | 3 | 60 |
| 38 | 3 | 3 | 3 | 3 | 4 | 4 | 3 | 3 | 3 | 3 | 3 | 3 | 3 | 3 | 3 | 2 | 2 | 4 | 3 | 3 | 3 | 4 | 57 |
| 39 | 3 | 3 | 3 | 3 | 3 | 2 | 4 | 4 | 4 | 3 | 4 | 4 | 3 | 3 | 3 | 2 | 2 | 4 | 4 | 4 | 3 | 3 | 58 |
| 40 | 3 | 3 | 3 | 3 | 3 | 3 | 3 | 4 | 4 | 3 | 3 | 3 | 2 | 2 | 2 | 2 | 2 | 4 | 3 | 3 | 2 | 3 | 52 |
| 41 | 4 | 4 | 4 | 3 | 3 | 4 | 3 | 4 | 4 | 3 | 3 | 3 | 2 | 4 | 2 | 2 | 2 | 4 | 4 | 4 | 3 | 3 | 59 |
| 42 | 4 | 4 | 2 | 4 | 4 | 4 | 4 | 4 | 4 | 3 | 4 | 2 | 4 | 3 | 3 | 3 | 3 | 3 | 4 | 4 | 4 | 2 | 61 |
| 43 | 3 | 3 | 4 | 2 | 4 | 3 | 3 | 4 | 3 | 4 | 4 | 4 | 3 | 2 | 4 | 3 | 2 | 3 | 4 | 4 | 3 | 3 | 57 |
| 44 | 4 | 4 | 1 | 4 | 4 | 3 | 4 | 4 | 4 | 4 | 4 | 4 | 4 | 3 | 4 | 2 | 2 | 4 | 4 | 4 | 3 | 3 | 62 |
| 45 | 4 | 4 | 1 | 4 | 4 | 3 | 4 | 4 | 4 | 3 | 4 | 4 | 4 | 1 | 2 | 4 | 3 | 3 | 4 | 4 | 3 | 3 | 57 |
| 46 | 4 | 4 | 3 | 4 | 4 | 4 | 4 | 4 | 4 | 4 | 4 | 4 | 4 | 3 | 4 | 2 | 2 | 4 | 4 | 4 | 3 | 2 | 65 |
| 47 | 4 | 4 | 3 | 4 | 4 | 4 | 4 | 4 | 4 | 4 | 4 | 4 | 4 | 3 | 4 | 2 | 2 | 4 | 4 | 4 | 3 | 2 | 65 |
| 48 | 3 | 3 | 3 | 3 | 3 | 2 | 3 | 3 | 2 | 3 | 3 | 3 | 3 | 3 | 2 | 3 | 3 | 3 | 3 | 3 | 2 | 3 | 50 |
| 49 | 2 | 2 | 2 | 3 | 3 | 3 | 3 | 3 | 3 | 3 | 4 | 2 | 2 | 3 | 3 | 2 | 2 | 3 | 3 | 3 | 3 | 2 | 50 |
| 50 | 3 | 3 | 3 | 3 | 3 | 3 | 3 | 3 | 3 | 3 | 3 | 3 | 3 | 3 | 3 | 2 | 2 | 3 | 3 | 3 | 3 | 2 | 52 |
| 51 | 4 | 4 | 2 | 4 | 4 | 3 | 4 | 4 | 4 | 4 | 2 | 4 | 4 | 4 | 4 | 2 | 2 | 4 | 4 | 4 | 2 | 1 | 60 |
| 52 | 4 | 4 | 2 | 4 | 4 | 2 | 4 | 4 | 4 | 4 | 2 | 4 | 4 | 2 | 4 | 2 | 2 | 4 | 4 | 4 | 2 | 1 | 59 |

| | | | | | | | | | | | | | | | | | | | | |
|----|---|---|---|---|---|---|---|---|---|---|---|---|---|---|---|---|---|---|---|----|
| 71 | 3 | 2 | 4 | 3 | 2 | 4 | 3 | 4 | 4 | 3 | 4 | 4 | 4 | 3 | 1 | 4 | 4 | 2 | 4 | 55 |
| 72 | 4 | 2 | 4 | 4 | 2 | 4 | 4 | 4 | 4 | 4 | 4 | 4 | 4 | 3 | 3 | 4 | 4 | 2 | 3 | 60 |
| 73 | 4 | 2 | 4 | 3 | 2 | 4 | 3 | 4 | 4 | 3 | 4 | 4 | 4 | 3 | 1 | 4 | 4 | 2 | 1 | 56 |
| 74 | 4 | 3 | 4 | 4 | 4 | 4 | 3 | 4 | 4 | 4 | 3 | 4 | 4 | 3 | 3 | 3 | 4 | 3 | 4 | 64 |
| 75 | 4 | 3 | 4 | 4 | 4 | 4 | 4 | 4 | 4 | 2 | 4 | 3 | 4 | 3 | 4 | 3 | 3 | 3 | 3 | 62 |
| 76 | 4 | 3 | 4 | 4 | 4 | 4 | 4 | 3 | 3 | 3 | 4 | 4 | 4 | 4 | 2 | 4 | 4 | 3 | 4 | 65 |
| 77 | 3 | 4 | 4 | 4 | 4 | 4 | 3 | 4 | 3 | 4 | 3 | 4 | 4 | 4 | 4 | 4 | 4 | 4 | 4 | 65 |
| 78 | 4 | 4 | 4 | 4 | 4 | 4 | 4 | 4 | 3 | 4 | 3 | 4 | 4 | 3 | 3 | 4 | 4 | 4 | 3 | 67 |

Data Kasar Dukungan Orangtua (X)

| X/Y | 1 | 2 | 3 | 4 | 5 | 6 | 7 | 8 | 9 | 10 | 11 | 12 | 13 | 14 | 15 | 16 | 17 | 18 | 19 | 20 | 21 | 22 | 23 | 24 | jml |
|-----|---|---|---|---|---|---|---|---|---|----|----|----|----|----|----|----|----|----|----|----|----|----|----|----|-----|
| 1 | 3 | 4 | 2 | 1 | 4 | 3 | 3 | 3 | 3 | 4 | 1 | 3 | 3 | 4 | 3 | 3 | 4 | 3 | 3 | 4 | 3 | 4 | 3 | 4 | 75 |
| 2 | 4 | 4 | 3 | 3 | 3 | 3 | 4 | 2 | 3 | 2 | 4 | 3 | 4 | 3 | 1 | 2 | 4 | 4 | 2 | 3 | 4 | 2 | 3 | 3 | 73 |
| 3 | 3 | 4 | 1 | 4 | 4 | 4 | 4 | 3 | 3 | 3 | 1 | 4 | 3 | 4 | 2 | 2 | 4 | 4 | 4 | 4 | 3 | 4 | 3 | 4 | 79 |
| 4 | 4 | 4 | 1 | 2 | 3 | 2 | 3 | 3 | 1 | 4 | 4 | 2 | 2 | 3 | 1 | 3 | 3 | 1 | 4 | 3 | 1 | 1 | 4 | 2 | 61 |
| 5 | 2 | 3 | 2 | 1 | 4 | 4 | 3 | 3 | 3 | 3 | 3 | 4 | 3 | 3 | 3 | 3 | 4 | 4 | 3 | 4 | 3 | 2 | 3 | 3 | 73 |
| 6 | 4 | 4 | 2 | 2 | 1 | 4 | 3 | 4 | 2 | 1 | 1 | 4 | 3 | 4 | 4 | 4 | 4 | 4 | 3 | 4 | 4 | 1 | 4 | 4 | 75 |
| 7 | 3 | 3 | 2 | 2 | 3 | 3 | 3 | 2 | 2 | 2 | 3 | 3 | 3 | 3 | 3 | 3 | 3 | 3 | 3 | 3 | 3 | 2 | 3 | 3 | 66 |
| 8 | 3 | 3 | 2 | 2 | 3 | 3 | 3 | 2 | 2 | 2 | 3 | 3 | 3 | 3 | 3 | 3 | 3 | 3 | 3 | 3 | 3 | 3 | 3 | 3 | 67 |
| 9 | 2 | 3 | 4 | 4 | 4 | 4 | 3 | 3 | 3 | 3 | 2 | 3 | 4 | 3 | 2 | 2 | 3 | 3 | 1 | 1 | 4 | 4 | 1 | 1 | 67 |
| 10 | 3 | 3 | 3 | 2 | 3 | 3 | 3 | 3 | 2 | 2 | 4 | 3 | 3 | 3 | 3 | 4 | 3 | 3 | 3 | 3 | 3 | 3 | 3 | 3 | 71 |
| 11 | 3 | 2 | 4 | 1 | 4 | 4 | 3 | 3 | 2 | 3 | 4 | 4 | 2 | 4 | 4 | 1 | 4 | 4 | 4 | 4 | 4 | 1 | 3 | 4 | 76 |
| 12 | 4 | 3 | 4 | 2 | 4 | 4 | 4 | 4 | 4 | 2 | 1 | 3 | 4 | 4 | 3 | 1 | 4 | 4 | 1 | 3 | 4 | 4 | 1 | 1 | 73 |
| 13 | 3 | 4 | 1 | 1 | 4 | 4 | 4 | 3 | 2 | 4 | 4 | 4 | 4 | 3 | 4 | 1 | 4 | 4 | 4 | 4 | 4 | 4 | 4 | 4 | 82 |
| 14 | 4 | 4 | 2 | 1 | 4 | 4 | 4 | 4 | 2 | 4 | 1 | 4 | 4 | 4 | 1 | 3 | 4 | 4 | 1 | 4 | 4 | 4 | 4 | 4 | 79 |
| 15 | 4 | 3 | 4 | 2 | 4 | 4 | 4 | 3 | 3 | 4 | 4 | 4 | 4 | 4 | 2 | 3 | 4 | 4 | 3 | 3 | 4 | 3 | 3 | 3 | 83 |
| 16 | 3 | 3 | 3 | 2 | 4 | 4 | 3 | 3 | 2 | 3 | 4 | 3 | 3 | 4 | 3 | 2 | 4 | 3 | 3 | 3 | 3 | 3 | 3 | 3 | 74 |
| 17 | 2 | 4 | 1 | 4 | 4 | 4 | 4 | 4 | 4 | 2 | 1 | 3 | 4 | 4 | 3 | 4 | 4 | 4 | 3 | 3 | 4 | 4 | 3 | 3 | 80 |
| 18 | 2 | 3 | 3 | 1 | 4 | 3 | 3 | 2 | 2 | 2 | 4 | 3 | 2 | 3 | 3 | 3 | 4 | 4 | 2 | 3 | 3 | 4 | 3 | 4 | 70 |
| 19 | 4 | 4 | 1 | 4 | 4 | 3 | 3 | 3 | 4 | 3 | 1 | 3 | 3 | 4 | 3 | 3 | 4 | 4 | 2 | 1 | 4 | 2 | 3 | 3 | 73 |
| 20 | 4 | 4 | 1 | 4 | 4 | 2 | 4 | 2 | 2 | 4 | 3 | 3 | 4 | 4 | 1 | 3 | 4 | 4 | 3 | 3 | 4 | 4 | 3 | 3 | 77 |
| 21 | 2 | 3 | 2 | 2 | 4 | 4 | 4 | 3 | 2 | 3 | 2 | 3 | 2 | 4 | 3 | 3 | 4 | 3 | 3 | 4 | 1 | 2 | 3 | 2 | 68 |
| 22 | 3 | 3 | 1 | 2 | 4 | 3 | 4 | 2 | 3 | 2 | 4 | 4 | 4 | 4 | 3 | 2 | 4 | 4 | 2 | 4 | 3 | 3 | 3 | 4 | 75 |

| | | | | | | | | | | | | | | | | | | | | | | | | | | | | | | | |
|----|---|---|---|---|---|---|---|---|---|---|---|---|---|---|---|---|---|---|---|---|---|---|---|---|---|---|---|---|---|----|----|
| 48 | 3 | 3 | 4 | 1 | 2 | 3 | 2 | 4 | 2 | 1 | 4 | 3 | 3 | 3 | 3 | 3 | 3 | 2 | 4 | 4 | 3 | 2 | 4 | 4 | 4 | 2 | 4 | 3 | 4 | 4 | 70 |
| 49 | 3 | 3 | 3 | 2 | 3 | 3 | 3 | 3 | 3 | 3 | 2 | 3 | 3 | 3 | 3 | 3 | 2 | 3 | 4 | 4 | 4 | 3 | 4 | 4 | 4 | 3 | 2 | 3 | 3 | 4 | 70 |
| 50 | 3 | 3 | 3 | 2 | 3 | 3 | 3 | 3 | 3 | 3 | 3 | 3 | 3 | 3 | 3 | 3 | 3 | 4 | 3 | 3 | 3 | 3 | 3 | 3 | 3 | 2 | 3 | 3 | 3 | 71 | |
| 51 | 3 | 3 | 4 | 2 | 4 | 3 | 3 | 4 | 4 | 3 | 3 | 3 | 3 | 3 | 4 | 2 | 2 | 4 | 4 | 4 | 4 | 3 | 4 | 4 | 3 | 3 | 3 | 4 | 4 | 78 | |
| 52 | 3 | 3 | 4 | 2 | 4 | 3 | 3 | 4 | 4 | 3 | 3 | 3 | 3 | 3 | 4 | 2 | 2 | 4 | 4 | 4 | 4 | 3 | 4 | 4 | 3 | 3 | 3 | 3 | 4 | 78 | |
| 53 | 3 | 4 | 1 | 1 | 4 | 4 | 3 | 4 | 3 | 3 | 1 | 3 | 4 | 4 | 1 | 1 | 4 | 4 | 4 | 3 | 4 | 3 | 4 | 4 | 4 | 2 | 3 | 2 | 3 | 69 | |
| 54 | 3 | 3 | 3 | 2 | 4 | 3 | 3 | 3 | 3 | 3 | 3 | 3 | 4 | 4 | 4 | 3 | 3 | 3 | 3 | 3 | 3 | 3 | 3 | 3 | 4 | 2 | 4 | 3 | 4 | 75 | |
| 55 | 3 | 3 | 3 | 2 | 4 | 3 | 3 | 4 | 3 | 4 | 3 | 3 | 3 | 4 | 3 | 3 | 4 | 3 | 4 | 4 | 4 | 3 | 4 | 4 | 3 | 4 | 3 | 4 | 4 | 80 | |
| 56 | 3 | 3 | 1 | 1 | 4 | 4 | 3 | 4 | 3 | 3 | 3 | 2 | 3 | 4 | 4 | 3 | 4 | 4 | 3 | 3 | 4 | 3 | 3 | 3 | 3 | 3 | 4 | 4 | 4 | 76 | |
| 57 | 4 | 2 | 1 | 2 | 4 | 3 | 4 | 3 | 4 | 1 | 2 | 4 | 3 | 3 | 3 | 2 | 4 | 4 | 4 | 4 | 4 | 4 | 4 | 4 | 4 | 3 | 4 | 3 | 4 | 75 | |
| 58 | 2 | 4 | 3 | 1 | 3 | 3 | 3 | 4 | 3 | 3 | 3 | 3 | 3 | 3 | 2 | 2 | 3 | 3 | 2 | 3 | 3 | 3 | 2 | 3 | 2 | 2 | 3 | 2 | 3 | 66 | |
| 59 | 4 | 4 | 2 | 2 | 4 | 4 | 3 | 2 | 2 | 3 | 4 | 3 | 3 | 3 | 3 | 3 | 2 | 4 | 4 | 4 | 4 | 3 | 4 | 3 | 3 | 3 | 3 | 3 | 4 | 74 | |
| 60 | 4 | 3 | 1 | 1 | 4 | 3 | 4 | 3 | 3 | 3 | 4 | 4 | 4 | 4 | 3 | 2 | 4 | 4 | 4 | 4 | 4 | 4 | 4 | 4 | 4 | 3 | 4 | 3 | 4 | 80 | |
| 61 | 4 | 3 | 1 | 2 | 4 | 3 | 3 | 3 | 4 | 4 | 1 | 4 | 3 | 4 | 2 | 3 | 4 | 4 | 3 | 4 | 4 | 4 | 4 | 4 | 4 | 4 | 4 | 4 | 3 | 78 | |
| 62 | 4 | 3 | 2 | 2 | 4 | 3 | 3 | 2 | 3 | 4 | 2 | 3 | 3 | 3 | 2 | 3 | 3 | 3 | 3 | 3 | 3 | 3 | 3 | 3 | 4 | 2 | 3 | 3 | 3 | 70 | |
| 63 | 3 | 3 | 4 | 1 | 4 | 3 | 3 | 3 | 3 | 2 | 4 | 3 | 3 | 3 | 4 | 4 | 4 | 3 | 4 | 4 | 4 | 3 | 4 | 4 | 3 | 3 | 4 | 3 | 4 | 78 | |
| 64 | 4 | 4 | 3 | 2 | 4 | 4 | 3 | 4 | 3 | 2 | 2 | 3 | 3 | 4 | 2 | 3 | 4 | 4 | 4 | 4 | 4 | 4 | 4 | 4 | 4 | 4 | 3 | 4 | 4 | 80 | |
| 65 | 2 | 4 | 2 | 1 | 4 | 4 | 4 | 2 | 2 | 3 | 1 | 3 | 4 | 3 | 3 | 2 | 4 | 1 | 3 | 4 | 4 | 1 | 3 | 4 | 4 | 4 | 4 | 4 | 3 | 71 | |
| 66 | 2 | 4 | 2 | 2 | 4 | 4 | 4 | 2 | 2 | 3 | 2 | 3 | 3 | 3 | 3 | 2 | 4 | 1 | 4 | 4 | 4 | 4 | 4 | 4 | 4 | 3 | 4 | 4 | 4 | 73 | |
| 67 | 3 | 3 | 2 | 2 | 3 | 3 | 3 | 3 | 2 | 3 | 3 | 3 | 3 | 3 | 4 | 3 | 4 | 3 | 3 | 3 | 3 | 3 | 3 | 3 | 3 | 3 | 3 | 3 | 3 | 71 | |
| 68 | 3 | 3 | 2 | 2 | 3 | 3 | 3 | 3 | 2 | 3 | 3 | 3 | 3 | 3 | 2 | 3 | 4 | 3 | 3 | 3 | 3 | 3 | 3 | 3 | 3 | 3 | 4 | 3 | 4 | 70 | |
| 69 | 3 | 3 | 2 | 2 | 3 | 3 | 3 | 3 | 2 | 3 | 3 | 3 | 3 | 3 | 2 | 3 | 4 | 3 | 3 | 3 | 3 | 3 | 3 | 3 | 3 | 3 | 3 | 3 | 3 | 69 | |
| 70 | 3 | 3 | 2 | 2 | 3 | 3 | 3 | 3 | 2 | 3 | 3 | 3 | 3 | 3 | 2 | 3 | 4 | 3 | 3 | 3 | 3 | 3 | 3 | 3 | 3 | 3 | 3 | 3 | 3 | 69 | |
| 71 | 3 | 3 | 4 | 1 | 3 | 3 | 3 | 1 | 3 | 1 | 2 | 3 | 4 | 4 | 4 | 3 | 4 | 4 | 4 | 4 | 4 | 4 | 4 | 4 | 4 | 2 | 3 | 3 | 4 | 72 | |
| 72 | 3 | 3 | 4 | 2 | 4 | 3 | 3 | 3 | 3 | 3 | 3 | 3 | 3 | 4 | 3 | 2 | 4 | 4 | 4 | 4 | 4 | 4 | 4 | 4 | 3 | 3 | 3 | 4 | 4 | 78 | |

| | | | | | | | | | | | | | | | | | | | | | | | |
|----|---|---|---|---|---|---|---|---|---|---|---|---|---|---|---|---|---|---|---|---|---|---|----|
| 73 | 3 | 3 | 3 | 2 | 3 | 3 | 3 | 3 | 3 | 3 | 3 | 3 | 4 | 4 | 3 | 4 | 4 | 4 | 4 | 4 | 3 | 4 | 80 |
| 74 | 3 | 3 | 3 | 2 | 3 | 3 | 3 | 4 | 3 | 3 | 4 | 3 | 3 | 4 | 3 | 4 | 4 | 4 | 4 | 4 | 3 | 4 | 78 |
| 75 | 3 | 3 | 2 | 2 | 4 | 3 | 4 | 3 | 2 | 2 | 3 | 3 | 3 | 3 | 3 | 3 | 3 | 3 | 3 | 3 | 2 | 3 | 69 |
| 76 | 3 | 3 | 3 | 2 | 4 | 3 | 4 | 3 | 3 | 3 | 4 | 3 | 3 | 4 | 3 | 4 | 4 | 4 | 4 | 4 | 3 | 4 | 78 |
| 77 | 4 | 4 | 2 | 1 | 4 | 4 | 4 | 4 | 4 | 3 | 4 | 3 | 4 | 4 | 4 | 4 | 4 | 4 | 4 | 4 | 3 | 3 | 84 |
| 78 | 4 | 4 | 2 | 2 | 4 | 4 | 4 | 4 | 4 | 2 | 3 | 4 | 2 | 1 | 2 | 4 | 4 | 4 | 4 | 1 | 4 | 3 | 72 |

Data Dukungan Orangtua Setelah Gugur

| X/Y | 1 | 5 | 6 | 8 | 9 | 12 | 13 | 14 | 16 | 17 | 18 | 19 | 20 | 21 | 22 | 23 | 24 | jml |
|-----|---|---|---|---|---|----|----|----|----|----|----|----|----|----|----|----|----|-----|
| 1 | 3 | 4 | 3 | 3 | 3 | 3 | 3 | 4 | 3 | 4 | 3 | 3 | 4 | 3 | 4 | 3 | 4 | 57 |
| 2 | 4 | 3 | 3 | 2 | 3 | 3 | 4 | 3 | 2 | 4 | 4 | 2 | 3 | 4 | 2 | 3 | 3 | 52 |
| 3 | 3 | 4 | 4 | 3 | 3 | 4 | 3 | 4 | 2 | 4 | 4 | 4 | 3 | 4 | 3 | 4 | 4 | 60 |
| 4 | 4 | 3 | 2 | 3 | 1 | 2 | 2 | 3 | 3 | 3 | 1 | 4 | 3 | 1 | 1 | 4 | 2 | 42 |
| 5 | 2 | 4 | 4 | 3 | 3 | 4 | 3 | 3 | 3 | 4 | 4 | 3 | 4 | 3 | 2 | 3 | 3 | 55 |
| 6 | 4 | 1 | 4 | 4 | 2 | 4 | 3 | 4 | 4 | 4 | 4 | 3 | 4 | 4 | 1 | 4 | 4 | 58 |
| 7 | 3 | 3 | 3 | 2 | 2 | 3 | 3 | 3 | 3 | 3 | 3 | 3 | 3 | 3 | 2 | 3 | 3 | 48 |
| 8 | 3 | 3 | 3 | 2 | 2 | 3 | 3 | 3 | 3 | 3 | 3 | 3 | 3 | 3 | 3 | 3 | 3 | 49 |
| 9 | 2 | 4 | 4 | 3 | 3 | 3 | 4 | 3 | 2 | 3 | 3 | 1 | 1 | 4 | 4 | 1 | 1 | 46 |
| 10 | 3 | 3 | 3 | 3 | 2 | 3 | 3 | 3 | 4 | 3 | 3 | 3 | 3 | 3 | 3 | 3 | 3 | 51 |
| 11 | 3 | 4 | 4 | 3 | 2 | 4 | 2 | 4 | 1 | 4 | 4 | 4 | 4 | 4 | 1 | 3 | 4 | 55 |
| 12 | 4 | 4 | 4 | 4 | 4 | 3 | 4 | 4 | 1 | 4 | 4 | 1 | 3 | 4 | 4 | 1 | 1 | 54 |
| 13 | 3 | 4 | 4 | 3 | 2 | 4 | 4 | 3 | 1 | 4 | 4 | 4 | 4 | 4 | 4 | 4 | 4 | 60 |
| 14 | 4 | 4 | 4 | 4 | 2 | 4 | 4 | 4 | 3 | 4 | 4 | 1 | 4 | 4 | 4 | 4 | 4 | 62 |
| 15 | 4 | 4 | 4 | 3 | 3 | 4 | 4 | 4 | 3 | 4 | 4 | 3 | 3 | 4 | 3 | 3 | 3 | 60 |
| 16 | 3 | 4 | 4 | 3 | 2 | 3 | 3 | 4 | 2 | 4 | 3 | 3 | 3 | 3 | 3 | 3 | 3 | 53 |
| 17 | 2 | 4 | 4 | 4 | 4 | 3 | 4 | 4 | 4 | 4 | 4 | 3 | 3 | 4 | 4 | 3 | 3 | 61 |
| 18 | 2 | 4 | 3 | 2 | 2 | 3 | 2 | 3 | 3 | 4 | 4 | 2 | 3 | 3 | 4 | 3 | 4 | 51 |
| 19 | 4 | 4 | 3 | 3 | 4 | 3 | 3 | 4 | 3 | 4 | 4 | 2 | 1 | 4 | 2 | 3 | 3 | 54 |
| 20 | 4 | 4 | 2 | 2 | 2 | 3 | 4 | 4 | 3 | 4 | 4 | 3 | 3 | 4 | 4 | 3 | 3 | 56 |
| 21 | 2 | 4 | 4 | 3 | 2 | 3 | 2 | 4 | 3 | 4 | 3 | 3 | 4 | 1 | 2 | 3 | 2 | 49 |
| 22 | 3 | 4 | 3 | 2 | 3 | 4 | 4 | 4 | 2 | 4 | 4 | 2 | 4 | 3 | 3 | 3 | 4 | 56 |

| | | | | | | | | | | | | | | | | | | | | | | | | | |
|----|---|---|---|---|---|---|---|---|---|---|---|---|---|---|---|---|---|---|---|---|---|---|---|---|----|
| 48 | 3 | 2 | 4 | 3 | 4 | 2 | 3 | 3 | 3 | 3 | 3 | 3 | 3 | 3 | 2 | 4 | 4 | 3 | 4 | 4 | 2 | 4 | 3 | 4 | 52 |
| 49 | 3 | 3 | 3 | 3 | 3 | 3 | 3 | 3 | 2 | 3 | 3 | 3 | 3 | 3 | 3 | 3 | 4 | 4 | 3 | 4 | 3 | 2 | 3 | 3 | 51 |
| 50 | 3 | 3 | 3 | 3 | 3 | 3 | 3 | 3 | 3 | 3 | 3 | 3 | 3 | 3 | 3 | 3 | 3 | 3 | 3 | 3 | 3 | 2 | 3 | 3 | 51 |
| 51 | 3 | 4 | 3 | 3 | 4 | 4 | 3 | 3 | 4 | 2 | 4 | 4 | 4 | 4 | 3 | 4 | 4 | 4 | 4 | 4 | 3 | 3 | 3 | 4 | 58 |
| 52 | 3 | 4 | 3 | 3 | 4 | 4 | 3 | 3 | 4 | 2 | 4 | 4 | 4 | 4 | 3 | 4 | 4 | 4 | 4 | 4 | 3 | 3 | 3 | 4 | 58 |
| 53 | 3 | 4 | 4 | 4 | 4 | 3 | 3 | 3 | 1 | 4 | 4 | 4 | 4 | 4 | 4 | 3 | 4 | 4 | 4 | 4 | 4 | 2 | 3 | 2 | 55 |
| 54 | 3 | 4 | 3 | 3 | 3 | 3 | 3 | 3 | 4 | 3 | 3 | 4 | 4 | 3 | 3 | 3 | 3 | 3 | 4 | 4 | 4 | 2 | 4 | 3 | 54 |
| 55 | 3 | 4 | 3 | 3 | 4 | 3 | 3 | 3 | 3 | 3 | 4 | 4 | 4 | 4 | 3 | 4 | 4 | 4 | 4 | 4 | 3 | 4 | 3 | 4 | 59 |
| 56 | 3 | 4 | 4 | 4 | 4 | 3 | 2 | 3 | 4 | 3 | 4 | 4 | 4 | 4 | 4 | 3 | 3 | 4 | 4 | 4 | 3 | 3 | 4 | 4 | 58 |
| 57 | 4 | 4 | 3 | 3 | 3 | 4 | 4 | 3 | 2 | 3 | 4 | 4 | 4 | 4 | 4 | 4 | 4 | 4 | 4 | 4 | 4 | 3 | 4 | 3 | 60 |
| 58 | 2 | 3 | 3 | 4 | 3 | 3 | 3 | 3 | 3 | 2 | 3 | 3 | 3 | 2 | 3 | 2 | 3 | 2 | 3 | 3 | 3 | 2 | 2 | 3 | 47 |
| 59 | 4 | 4 | 4 | 4 | 2 | 2 | 3 | 3 | 2 | 2 | 4 | 4 | 4 | 4 | 3 | 3 | 3 | 4 | 4 | 3 | 3 | 3 | 3 | 3 | 53 |
| 60 | 4 | 4 | 3 | 3 | 3 | 3 | 4 | 4 | 2 | 2 | 4 | 4 | 4 | 4 | 4 | 4 | 4 | 4 | 4 | 4 | 4 | 3 | 4 | 3 | 61 |
| 61 | 4 | 4 | 3 | 3 | 3 | 4 | 4 | 3 | 4 | 3 | 4 | 4 | 4 | 3 | 4 | 4 | 4 | 4 | 4 | 4 | 4 | 4 | 4 | 3 | 62 |
| 62 | 4 | 4 | 3 | 2 | 2 | 3 | 3 | 3 | 3 | 3 | 3 | 3 | 3 | 3 | 3 | 3 | 3 | 3 | 3 | 3 | 4 | 2 | 3 | 3 | 52 |
| 63 | 3 | 4 | 3 | 3 | 3 | 3 | 3 | 3 | 4 | 4 | 4 | 4 | 4 | 4 | 3 | 4 | 4 | 4 | 4 | 4 | 3 | 3 | 4 | 3 | 57 |
| 64 | 4 | 4 | 4 | 4 | 4 | 3 | 3 | 3 | 3 | 4 | 4 | 4 | 4 | 4 | 4 | 3 | 4 | 3 | 4 | 3 | 4 | 4 | 3 | 4 | 62 |
| 65 | 2 | 4 | 4 | 4 | 2 | 2 | 3 | 4 | 2 | 3 | 4 | 4 | 4 | 4 | 1 | 3 | 4 | 4 | 4 | 4 | 4 | 4 | 4 | 3 | 53 |
| 66 | 2 | 4 | 4 | 4 | 2 | 2 | 3 | 3 | 2 | 2 | 4 | 4 | 4 | 4 | 1 | 4 | 4 | 4 | 4 | 4 | 4 | 3 | 4 | 4 | 53 |
| 67 | 3 | 3 | 3 | 3 | 3 | 2 | 3 | 3 | 3 | 3 | 4 | 4 | 4 | 4 | 3 | 3 | 3 | 3 | 3 | 3 | 3 | 3 | 3 | 3 | 51 |
| 68 | 3 | 3 | 3 | 3 | 3 | 2 | 3 | 3 | 3 | 3 | 4 | 4 | 4 | 4 | 3 | 3 | 3 | 3 | 4 | 4 | 3 | 3 | 4 | 3 | 52 |
| 69 | 3 | 3 | 3 | 3 | 3 | 2 | 3 | 3 | 3 | 3 | 4 | 4 | 4 | 4 | 3 | 3 | 3 | 3 | 3 | 3 | 3 | 3 | 3 | 3 | 51 |
| 70 | 3 | 3 | 3 | 3 | 3 | 2 | 3 | 3 | 3 | 3 | 4 | 4 | 4 | 4 | 3 | 3 | 3 | 3 | 3 | 3 | 3 | 3 | 3 | 3 | 51 |
| 71 | 3 | 3 | 1 | 3 | 3 | 3 | 3 | 3 | 3 | 4 | 4 | 4 | 4 | 4 | 4 | 4 | 4 | 4 | 4 | 4 | 4 | 3 | 3 | 4 | 54 |
| 72 | 3 | 4 | 3 | 3 | 3 | 3 | 3 | 3 | 2 | 4 | 4 | 4 | 4 | 4 | 4 | 4 | 4 | 4 | 4 | 4 | 3 | 3 | 3 | 4 | 57 |

| | | | | | | | | | | | | | | | | | | | |
|----|---|---|---|---|---|---|---|---|---|---|---|---|---|---|---|---|---|---|----|
| 73 | 3 | 3 | 3 | 3 | 3 | 3 | 3 | 3 | 4 | 3 | 4 | 4 | 4 | 4 | 4 | 4 | 3 | 4 | 59 |
| 74 | 3 | 3 | 3 | 4 | 3 | 3 | 3 | 3 | 3 | 3 | 4 | 4 | 4 | 4 | 3 | 3 | 3 | 4 | 56 |
| 75 | 3 | 4 | 3 | 3 | 3 | 3 | 3 | 3 | 3 | 3 | 2 | 3 | 3 | 2 | 3 | 3 | 3 | 3 | 50 |
| 76 | 3 | 4 | 3 | 3 | 3 | 3 | 3 | 3 | 3 | 4 | 3 | 4 | 4 | 3 | 3 | 3 | 3 | 4 | 56 |
| 77 | 4 | 4 | 4 | 4 | 4 | 3 | 4 | 3 | 4 | 3 | 4 | 4 | 4 | 3 | 4 | 3 | 3 | 3 | 63 |
| 78 | 4 | 4 | 4 | 4 | 4 | 3 | 4 | 2 | 2 | 1 | 4 | 4 | 4 | 3 | 1 | 4 | 3 | 3 | 54 |

Lampiran 3:

Validitas Motivasi Belajar

| Correlations | | VAR00025 |
|--------------|---------------------|----------|
| VAR00001 | Pearson Correlation | .615** |
| | Sig. (2-tailed) | .000 |
| | N | 78 |
| VAR00002 | Pearson Correlation | .323** |
| | Sig. (2-tailed) | .004 |
| | N | 78 |
| VAR00003 | Pearson Correlation | .611** |
| | Sig. (2-tailed) | .000 |
| | N | 78 |
| VAR00005 | Pearson Correlation | .785** |
| | Sig. (2-tailed) | .000 |
| | N | 78 |
| VAR00006 | Pearson Correlation | .374** |
| | Sig. (2-tailed) | .001 |
| | N | 78 |
| VAR00007 | Pearson Correlation | .543** |
| | Sig. (2-tailed) | .000 |
| | N | 78 |
| VAR00008 | Pearson Correlation | .475** |
| | Sig. (2-tailed) | .000 |
| | N | 78 |
| VAR00009 | Pearson Correlation | .585** |
| | Sig. (2-tailed) | .000 |
| | N | 78 |
| VAR00011 | Pearson Correlation | .248* |
| | Sig. (2-tailed) | .029 |
| | N | 78 |
| VAR00013 | Pearson Correlation | .482** |
| | Sig. (2-tailed) | .000 |
| | N | 78 |
| VAR00015 | Pearson Correlation | .278* |

| | | |
|----------|---------------------|--------|
| | Sig. (2-tailed) | .014 |
| | N | 78 |
| VAR00017 | Pearson Correlation | .313** |
| | Sig. (2-tailed) | .005 |
| | N | 78 |
| VAR00018 | Pearson Correlation | .499** |
| | Sig. (2-tailed) | .000 |
| | N | 78 |
| VAR00020 | Pearson Correlation | .245* |
| | Sig. (2-tailed) | .031 |
| | N | 78 |
| VAR00021 | Pearson Correlation | .565** |
| | Sig. (2-tailed) | .000 |
| | N | 78 |
| VAR00022 | Pearson Correlation | .586** |
| | Sig. (2-tailed) | .000 |
| | N | 78 |
| VAR00023 | Pearson Correlation | .477** |
| | Sig. (2-tailed) | .000 |
| | N | 78 |
| VAR00024 | Pearson Correlation | .279* |
| | Sig. (2-tailed) | .013 |
| | N | 78 |

** . Correlation is significant at the 0.01 level (2-tailed).

* . Correlation is significant at the 0.05 level (2-tailed).

Validitas Dukungan Orangtua

Correlations

| | | VAR00025 |
|----------|---------------------|----------|
| VAR00001 | Pearson Correlation | .393** |
| | Sig. (2-tailed) | .000 |
| | N | 78 |
| VAR00005 | Pearson Correlation | .348** |
| | Sig. (2-tailed) | .002 |
| | N | 78 |
| VAR00006 | Pearson Correlation | .241* |
| | Sig. (2-tailed) | .034 |
| | N | 78 |
| VAR00008 | Pearson Correlation | .305** |
| | Sig. (2-tailed) | .007 |
| | N | 78 |
| VAR00009 | Pearson Correlation | .553** |
| | Sig. (2-tailed) | .000 |
| | N | 78 |
| VAR00012 | Pearson Correlation | .369** |
| | Sig. (2-tailed) | .001 |
| | N | 78 |
| VAR00013 | Pearson Correlation | .429** |
| | Sig. (2-tailed) | .000 |
| | N | 78 |
| VAR00014 | Pearson Correlation | .499** |
| | Sig. (2-tailed) | .000 |
| | N | 78 |
| VAR00016 | Pearson Correlation | .215 |
| | Sig. (2-tailed) | .059 |
| | N | 78 |
| VAR00017 | Pearson Correlation | .497** |
| | Sig. (2-tailed) | .000 |
| | N | 78 |
| VAR00018 | Pearson Correlation | .483** |
| | Sig. (2-tailed) | .000 |
| | N | 78 |

| | | |
|----------|---------------------|--------|
| VAR00019 | Pearson Correlation | .386** |
| | Sig. (2-tailed) | .000 |
| | N | 78 |
| VAR00020 | Pearson Correlation | .397** |
| | Sig. (2-tailed) | .000 |
| | N | 78 |
| VAR00021 | Pearson Correlation | .509** |
| | Sig. (2-tailed) | .000 |
| | N | 78 |
| VAR00022 | Pearson Correlation | .542** |
| | Sig. (2-tailed) | .000 |
| | N | 78 |
| VAR00023 | Pearson Correlation | .372** |
| | Sig. (2-tailed) | .001 |
| | N | 78 |
| VAR00024 | Pearson Correlation | .484** |
| | Sig. (2-tailed) | .000 |
| | N | 78 |

** . Correlation is significant at the 0.01 level (2-tailed).

* . Correlation is significant at the 0.05 level (2-tailed).

Lampiran 4:

Reliabilitas Motivasi Belajar

Reliability

Scale: ALL VARIABLES

Case Processing Summary

| | | N | % |
|-------|-----------------------|----|-------|
| Cases | Valid | 78 | 100.0 |
| | Excluded ^a | 0 | .0 |
| | Total | 78 | 100.0 |

a. Listwise deletion based on all variables in the procedure.

Reliability Statistics

| Cronbach's Alpha | N of Items |
|------------------|------------|
| .724 | 18 |

Item-Total Statistics

| | Scale Mean if Item Deleted | Scale Variance if Item Deleted | Corrected Item-Total Correlation | Cronbach's Alpha if Item Deleted |
|----------|----------------------------|--------------------------------|----------------------------------|----------------------------------|
| VAR00001 | 55.5769 | 26.351 | .543 | .695 |
| VAR00002 | 56.2051 | 27.698 | .184 | .724 |
| VAR00003 | 55.5256 | 26.279 | .536 | .694 |
| VAR00005 | 55.5000 | 25.344 | .740 | .680 |
| VAR00006 | 55.9231 | 27.423 | .250 | .717 |
| VAR00007 | 55.4103 | 27.206 | .475 | .703 |
| VAR00008 | 55.7308 | 27.108 | .382 | .706 |
| VAR00009 | 55.4359 | 26.665 | .513 | .698 |
| VAR00011 | 55.9872 | 28.350 | .103 | .732 |
| VAR00013 | 55.7436 | 26.479 | .365 | .706 |
| VAR00015 | 55.9744 | 27.973 | .120 | .733 |
| VAR00017 | 56.5897 | 27.310 | .115 | .743 |
| VAR00018 | 55.5897 | 27.076 | .414 | .704 |
| VAR00020 | 56.3846 | 28.344 | .095 | .734 |

| | | | | |
|----------|---------|--------|------|------|
| VAR00021 | 55.4615 | 27.135 | .500 | .701 |
| VAR00022 | 55.4103 | 26.583 | .512 | .697 |
| VAR00023 | 56.0897 | 26.420 | .355 | .707 |
| VAR00024 | 56.2051 | 27.879 | .107 | .737 |

Scale Statistics

| Mean | Variance | Std. Deviation | N of Items |
|---------|----------|----------------|------------|
| 59.1026 | 29.885 | 5.46676 | 18 |

Reliabilitas Dukungan Orangtua

Reliability

Scale: ALL VARIABLES

Case Processing Summary

| | | N | % |
|-------|-----------------------|----|-------|
| Cases | Valid | 78 | 100.0 |
| | Excluded ^a | 0 | .0 |
| | Total | 78 | 100.0 |

a. Listwise deletion based on all variables in the procedure.

Reliability Statistics

| Cronbach's Alpha | N of Items |
|------------------|------------|
| .687 | 17 |

Item-Total Statistics

| | Scale Mean if Item Deleted | Scale Variance if Item Deleted | Corrected Item-Total Correlation | Cronbach's Alpha if Item Deleted |
|----------|----------------------------|--------------------------------|----------------------------------|----------------------------------|
| VAR00001 | 51.9872 | 22.402 | .268 | .675 |
| VAR00005 | 51.4615 | 22.901 | .239 | .678 |
| VAR00006 | 51.6154 | 23.564 | .132 | .687 |
| VAR00008 | 51.9231 | 22.825 | .153 | .689 |
| VAR00009 | 52.3718 | 20.756 | .421 | .655 |
| VAR00012 | 51.8846 | 23.090 | .283 | .676 |

| | | | | |
|----------|---------|--------|------|------|
| VAR00013 | 51.8462 | 22.366 | .321 | .670 |
| VAR00014 | 51.4872 | 22.279 | .415 | .664 |
| VAR00016 | 52.5000 | 23.500 | .048 | .704 |
| VAR00017 | 51.3077 | 22.579 | .425 | .666 |
| VAR00018 | 51.7051 | 21.353 | .343 | .666 |
| VAR00019 | 51.9103 | 22.187 | .240 | .679 |
| VAR00020 | 51.6795 | 22.117 | .252 | .677 |
| VAR00021 | 51.8462 | 20.989 | .364 | .663 |
| VAR00022 | 52.1410 | 20.460 | .390 | .659 |
| VAR00023 | 51.9744 | 22.441 | .237 | .679 |
| VAR00024 | 51.7949 | 21.516 | .354 | .665 |

Scale Statistics

| Mean | Variance | Std. Deviation | N of Items |
|---------|----------|----------------|------------|
| 55.0897 | 24.576 | 4.95744 | 17 |

Lampiran 5:

Korelasi

Correlations

Descriptive Statistics

| | Mean | Std. Deviation | N |
|---|---------|----------------|----|
| Y | 59.1026 | 5.46676 | 78 |
| X | 55.0897 | 4.95744 | 78 |

Correlations

| | | Y | X |
|---|---------------------|--------|--------|
| Y | Pearson Correlation | 1 | .550** |
| | Sig. (2-tailed) | | .000 |
| | N | 78 | 78 |
| X | Pearson Correlation | .550** | 1 |
| | Sig. (2-tailed) | .000 | |
| | N | 78 | 78 |

** . Correlation is significant at the 0.01 level (2-tailed).

Lampiran 6:

Regresi

Regression

| Model | Variables Entered | Variables Removed | Method |
|-------|-------------------|-------------------|--------|
| 1 | X ^a | | Enter |

a. All requested variables entered.

b. Dependent Variable: Y

| Model | R | R Square | Adjusted R Square | Std. Error of the Estimate |
|-------|-------------------|----------|-------------------|----------------------------|
| 1 | .550 ^a | .303 | .294 | 4.59463 |

a. Predictors: (Constant), X

ANOVA^b

| Model | | Sum of Squares | df | Mean Square | F | Sig. |
|-------|------------|----------------|----|-------------|--------|-------------------|
| 1 | Regression | 696.772 | 1 | 696.772 | 33.006 | .000 ^a |
| | Residual | 1604.407 | 76 | 21.111 | | |
| | Total | 2301.179 | 77 | | | |

a. Predictors: (Constant), X

b. Dependent Variable: Y

Coefficients^a

| Model | | Unstandardized Coefficients | | Standardized Coefficients | t | Sig. | Correlations | | |
|-------|------------|-----------------------------|------------|---------------------------|-------|------|--------------|---------|------|
| | | B | Std. Error | Beta | | | Zero-order | Partial | Part |
| 1 | (Constant) | 25.674 | 5.842 | | 4.395 | .000 | | | |
| | X | .607 | .106 | .550 | 5.745 | .000 | .550 | .550 | .550 |

a. Dependent Variable: Y

Lampiran 7:

Uji Asumsi klasik

Auto korelasi

Regression

| Model | Variables Entered | Variables Removed | Method |
|-------|--------------------------------|-------------------|--------|
| 1 | dukungan orangtua ^a | | Enter |

a. All requested variables entered.

b. Dependent Variable: motivasi belajar

| Model | R | R Square | Adjusted R Square | Std. Error of the Estimate | Durbin-Watson |
|-------|-------------------|----------|-------------------|----------------------------|---------------|
| 1 | .550 ^a | .303 | .294 | 4.59463 | 1.805 |

a. Predictors: (Constant), dukungan orangtua

b. Dependent Variable: motivasi belajar

ANOVA^b

| Model | | Sum of Squares | df | Mean Square | F | Sig. |
|-------|------------|----------------|----|-------------|--------|-------------------|
| 1 | Regression | 696.772 | 1 | 696.772 | 33.006 | .000 ^a |
| | Residual | 1604.407 | 76 | 21.111 | | |
| | Total | 2301.179 | 77 | | | |

a. Predictors: (Constant), dukungan orangtua

b. Dependent Variable: motivasi belajar

Coefficients^a

| Model | | Unstandardized Coefficients | | Standardized Coefficients | t | Sig. |
|-------|-------------------|-----------------------------|------------|---------------------------|-------|------|
| | | B | Std. Error | Beta | | |
| | | | | | | |
| 1 | (Constant) | 25.674 | 5.842 | | 4.395 | .000 |
| | dukungan orangtua | .607 | .106 | .550 | 5.745 | .000 |

a. Dependent Variable: motivasi belajar

Residuals Statistics^a

| | Minimum | Maximum | Mean | Std. Deviation | N |
|----------------------|-----------|---------|---------|----------------|----|
| Predicted Value | 51.1598 | 65.1161 | 59.1026 | 3.00815 | 78 |
| Residual | -12.15977 | 9.37907 | .00000 | 4.56470 | 78 |
| Std. Predicted Value | -2.640 | 1.999 | .000 | 1.000 | 78 |
| Std. Residual | -2.647 | 2.041 | .000 | .993 | 78 |

a. Dependent Variable: motivasi belajar

Hetero

Regression

| Model | Variables Entered | Variables Removed | Method |
|-------|--------------------------------|-------------------|--------|
| 1 | dukungan orangtua ^a | . | Enter |

a. All requested variables entered.

b. Dependent Variable: motivasi belajar

| Model | R | R Square | Adjusted R Square | Std. Error of the Estimate | Durbin-Watson |
|-------|-------------------|----------|-------------------|----------------------------|---------------|
| 1 | .550 ^a | .303 | .294 | 4.59463 | 1.805 |

a. Predictors: (Constant), dukungan orangtua

b. Dependent Variable: motivasi belajar

ANOVA^b

| Model | | Sum of Squares | df | Mean Square | F | Sig. |
|-------|------------|----------------|----|-------------|--------|-------------------|
| 1 | Regression | 696.772 | 1 | 696.772 | 33.006 | .000 ^a |
| | Residual | 1604.407 | 76 | 21.111 | | |
| | Total | 2301.179 | 77 | | | |

a. Predictors: (Constant), dukungan orangtua

b. Dependent Variable: motivasi belajar

Coefficients^a

| Model | | Unstandardized Coefficients | | Standardized Coefficients | t | Sig. |
|-------|-------------------|-----------------------------|------------|---------------------------|-------|------|
| | | B | Std. Error | Beta | | |
| | | | | | | |
| 1 | (Constant) | 25.674 | 5.842 | | 4.395 | .000 |
| | dukungan orangtua | .607 | .106 | .550 | 5.745 | .000 |

a. Dependent Variable: motivasi belajar

Residuals Statistics^a

| | Minimum | Maximum | Mean | Std. Deviation | N |
|----------------------|-----------|---------|---------|----------------|----|
| Predicted Value | 51.1598 | 65.1161 | 59.1026 | 3.00815 | 78 |
| Residual | -12.15977 | 9.37907 | .00000 | 4.56470 | 78 |
| Std. Predicted Value | -2.640 | 1.999 | .000 | 1.000 | 78 |
| Std. Residual | -2.647 | 2.041 | .000 | .993 | 78 |

a. Dependent Variable: motivasi belajar

Nonparametric Correlations

Correlations

| | | | dukungan orangtua | abs_res |
|----------------|-------------------|-------------------------|-------------------|---------|
| Spearman's rho | dukungan orangtua | Correlation Coefficient | 1.000 | -.027 |
| | | Sig. (2-tailed) | . | .815 |
| | | N | 78 | 78 |
| | abs_res | Correlation Coefficient | -.027 | 1.000 |
| | | Sig. (2-tailed) | .815 | . |
| | | N | 78 | 78 |

Nonparametric Correlations

| Correlations | | | abs_res |
|----------------|-------------------|-------------------------|---------|
| Spearman's rho | dukungan orangtua | Correlation Coefficient | -.027 |
| | | Sig. (2-tailed) | .815 |
| | | N | 78 |

Linier

Curve Fit

| Model Description | |
|---|--------------------|
| Model Name | MOD_1 |
| Dependent Variable | 1 motivasi belajar |
| Equation | 1 Linear |
| Independent Variable | dukungan orangtua |
| Constant | Included |
| Variable Whose Values Label Observations in Plots | Unspecified |

| Case Processing Summary | |
|-----------------------------|----|
| | N |
| Total Cases | 78 |
| Excluded Cases ^a | 0 |
| Forecasted Cases | 0 |
| Newly Created Cases | 0 |

a. Cases with a missing value in any variable are excluded from the analysis.

| | Variables | |
|---------------------------|-----------|------------------|
| | Dependent | Independent |
| | | motivasi belajar |
| Number of Positive Values | 78 | 78 |

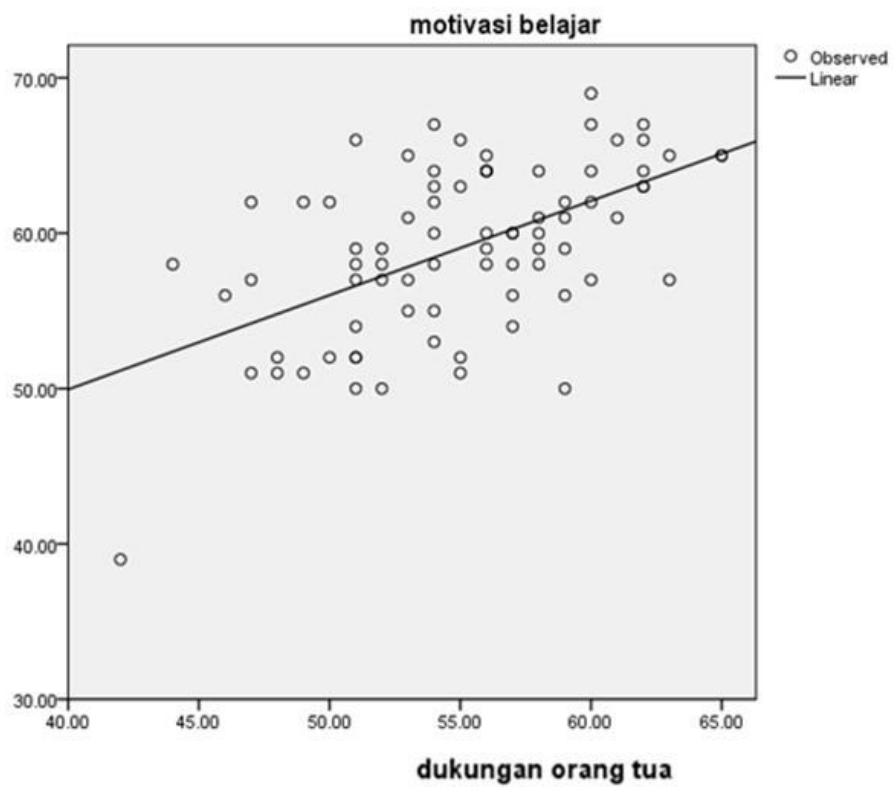
| | | | |
|---------------------------|----------------|---|---|
| Number of Zeros | | 0 | 0 |
| Number of Negative Values | | 0 | 0 |
| Number of Missing Values | User-Missing | 0 | 0 |
| | System-Missing | 0 | 0 |

Model Summary and Parameter Estimates

Dependent Variable:motivasi belajar

| Equation | Model Summary | | | | | Parameter Estimates | |
|-----------|---------------|--------|-----|-----|------|---------------------|------|
| | R Square | F | df1 | df2 | Sig. | Constant | b1 |
| 1. Linear | .303 | 33.006 | 1 | 76 | .000 | 25.674 | .607 |

The independent variable is persepsi dukungan orangtua.



Multiko

Regression

Variables Entered/Removed^b

| Model | Variables Entered | Variables Removed | Method |
|-------|--------------------------------|-------------------|--------|
| 1 | dukungan orangtua ^a | . | Enter |

a. All requested variables entered.

b. Dependent Variable: motivasi belajar

Model Summary

| Model | R | R Square | Adjusted R Square | Std. Error of the Estimate |
|-------|-------------------|----------|-------------------|----------------------------|
| 1 | .550 ^a | .303 | .294 | 4.59463 |

a. Predictors: (Constant), dukungan orangtua

ANOVA^b

| Model | | Sum of Squares | df | Mean Square | F | Sig. |
|-------|------------|----------------|----|-------------|--------|-------------------|
| 1 | Regression | 696.772 | 1 | 696.772 | 33.006 | .000 ^a |
| | Residual | 1604.407 | 76 | 21.111 | | |
| | Total | 2301.179 | 77 | | | |

a. Predictors: (Constant), dukungan orangtua

b. Dependent Variable: motivasi belajar

Coefficients^a

| Model | Unstandardized Coefficients | | Standardized Coefficients | t | Sig. | Collinearity Statistics | | |
|-------------------|-----------------------------|------------|---------------------------|-------|------|-------------------------|-------|--|
| | B | Std. Error | Beta | | | Tolerance | VIF | |
| | | | | | | | | |
| (Constant) | 25.674 | 5.842 | | 4.395 | .000 | | | |
| Dukungan orangtua | .607 | .106 | .550 | 5.745 | .000 | 1.000 | 1.000 | |

a. Dependent Variable: motivasi belajar

Collinearity Diagnostics^a

| Model | Dimension | Eigenvalue | Condition Index | Variance Proportions | |
|-------|-----------|------------|-----------------|----------------------|-------------------|
| | | | | (Constant) | dukungan orangtua |
| 1 | 1 | 1.996 | 1.000 | .00 | .00 |
| | 2 | .004 | 22.414 | 1.00 | 1.00 |

a. Dependent Variable: motivasi belajar

Normalitas

NPar Tests

One-Sample Kolmogorov-Smirnov Test

| | | Unstandardized Residual |
|----------------------------------|----------------|----------------------------|
| N | | 78 |
| Normal Parameters ^{a,b} | Mean | .0000000 |
| | Std. Deviation | 4.56469725 |
| Most Extreme Differences | Absolute | .066 |
| | Positive | .035 |
| | Negative | -.066 |
| Kolmogorov-Smirnov Z | | .579 |
| Asymp. Sig. (2-tailed) | | .891 |

a. Test distribution is Normal.

b. Calculated from data.

Lampiran 8:

Prosentase

Descriptive Statistics

| | N | Minimum | Maximum | Mean | Std. Deviation |
|--------------------|----|---------|---------|---------|----------------|
| Dukungan orangtua | 78 | 42.00 | 65.00 | 55.0897 | 4.95744 |
| Valid N (listwise) | 78 | | | | |

Descriptive Statistics

| | N | Minimum | Maximum | Mean | Std. Deviation |
|--------------------|----|---------|---------|---------|----------------|
| Motivasi belajar | 78 | 39.00 | 69.00 | 59.1026 | 5.46676 |
| Valid N (listwise) | 78 | | | | |

Frequency Table

Dukungan orangtua

| | Frequency | Percent | Valid Percent | Cumulative Percent |
|--------------|-----------|---------|---------------|--------------------|
| Valid Rendah | 12 | 15.4 | 15.4 | 15.4 |
| Sedang | 45 | 57.7 | 57.7 | 73.1 |
| Tinggi | 21 | 26.9 | 26.9 | 100.0 |
| Total | 78 | 100.0 | 100.0 | |

Motivasi belajar

| | Frequency | Percent | Valid Percent | Cumulative Percent |
|--------------|-----------|---------|---------------|--------------------|
| Valid Rendah | 1 | 1.3 | 1.3 | 1.3 |
| Sedang | 38 | 48.7 | 48.7 | 50.0 |
| Tinggi | 39 | 50.0 | 50.0 | 100.0 |
| Total | 78 | 100.0 | 100.0 | |

Lampiran 9: Data Sekolah

1. Sejarah Singkat MI Hidayatut Thowalib

Salah satu kebijakan pemerintah adalah peningkatan kualitas sumberdaya manusia dan pengembangan otonomi sekolah/madrasah. Manajemen berbasis madrasah (MBM) merupakan salah satu cara mewujudkan kebijakan tersebut. Perencanaan sekolah/madrasah merupakan aspek kunci MBM hanya melalui perencanaan yang efektif, mutu peserta didik akan dapat di tingkatkan dan kewajiban untuk menuntaskan wajib belajar 9 tahun dapat tercapai. Sehingga perlunya madrasah yang bermutu yang mengikuti kebutuhan di masyarakat yang semakin meningkat dan bersaing.

MI HIDAYATUT THOWALIB Tegalsari didirikan pada tahun 1951, yang berawal dari ciri khas tradisional. Madrasah ini didirikan sebagai pendidikan non formal di rumah Bapak H. Mahmud, desa Tulungrejo B gang III, kecamatan Pare. Sementara pendirinya adalah Bapak K. Abdul Ghofur, Bapak H. Mahmud, Bapak Masnan, dan lainnya.

Mata Pelajaran saat itu disamakan dengan pondok pesantren, 85% pelajaran agama dan 15% pelajaran umum. Kelasnya hanya terdiri dari kelas 1-3 saja, dengan 6 tenaga guru. Madrasah ini berdiri diatas lahan seluas 945 m², dengan luas bangunan 460 m² dan bersertifikat wakaf no.579.4500/5-12-1987

Seiring dengan berjalannya waktu serta kepercayaan masyarakat yang semakin besar, kemudian pada tahun 1957 madrasah ini berkembang yang mulanya seperti pondok pesantren menjadi Madrasah Wajib Belajar

(MWB).dan pada tahun 1960, madrasah ini dipindah ke dusun Tegalsari desa Tulungrejo, di pekarangan Bapak H. Hasan, merupakan mertua bapak Ghofur. Setelah itu masyarakat mengadakan konsensus bersama dengan memberi nama “Hidayatut Thowalib”. Selain itu madrasah semakin terorganisasi dengan baik, hingga saat ini menjadi Yayasan Pendidikan Formal yang bernaungan dalam Yayasan Lembaga Pendidikan Ma’arif Hidayatut Thowalib dengan akreditasi “A” pada tahun 2010 (dokumentasi MI Hidayatut Thowalib).

2. Visi, Misi dan Tujuan MI Hidayatut Thowalib

a. Visi Madrasah

Visi Madrasah Ibtidaiyah Hidayatut Thowalib yaitu :

“Prestasi Terbaik Iman Taqwa Dan Ilmu Pengetahuan Teknologi yang Berjiwa Qur’ani“

b. Misi Madrasah

Misi Madrasah Ibtidaiyah Hidayatut Thowalib yaitu :

1. Menanamkan keyakinan, keimanan dan ketaqwaan kepada Allah SWT.
2. Membentuk peserta didik yang berkualitas di bidang ilmu pengetahuan dan teknologi.
3. Membentuk peserta didik yang berprestasi dan menghantarkan ke jenjang pendidikan selanjutnya yang berkualitas.
4. Pengelelolaan lembaga pendidikan yang profesional.

c. Tujuan Madrasah

Tujuan Madrasah adalah:

1. Terciptanya mental dan karakter peserta didik yang dapat menjadi contoh dalam masyarakat sebagai anak yang sholih dan sholihah.
2. Terciptanya peserta didik yang memiliki kemampuan kreatifitas dan akademik , tehnologi dan seni budaya.
3. Terciptanya peserta didik yang berprestasi dalam pengembangan minat dan bakat (pematik).

3. Data Guru MI Hidayatut Thowalib

Data guru berdasarkan dokumentasi MI HIDAYATUT THOWALIB bulan September tahun pelajaran 2012/2013 jumlah keseluruhan guru adalah sebanyak 19 orang. Daftar guru MI HIDAYATUT THOWALIB dapat di lihat pada tabel berikut:

| No | Nama Guru |
|----|-------------------------------|
| 1 | Muh. Syaifuddin Ghozali, S.Ag |
| 2 | Abdul Manaf |
| 3 | Munfatihatul Hidayah |
| 4 | M. Jami' Bachtiar, A.Ma |
| 5 | Wiwik Ani Farida |
| 6 | Improatin, S.Pd.I |
| 7 | Imam Masrur,S.Pd.I |
| 8 | Murfiyaningsih |
| 9 | M.Badrus Sholeh,S.S |
| 10 | Maskhurin Fajarina,S.Pd.I |
| 11 | Ainul Lu'luil Maknun |
| 12 | Sholihatul Ilmiyah,S.Pd.I |
| 13 | Lailatul Khafidhoh, S.Pd.I |
| 14 | Nia Chamidah |
| 15 | Binti Zuhriyah,S.Pd.I |
| 16 | Nur Anisa, S.Pd.I |

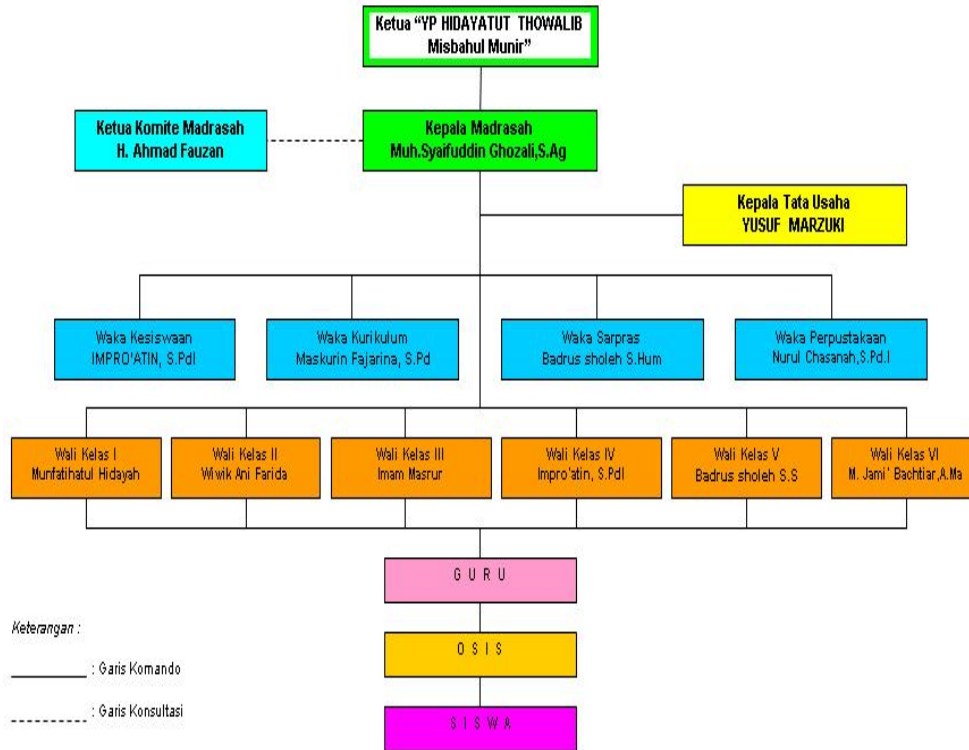
| | |
|----|-------------------|
| 17 | Chikmatul Faricha |
| 18 | Zumrotun Ni'mah |
| 19 | Ni'matul Choiroh |

4. Data Siswa MI Hidayatut Thowalib

Data siswa berdasarkan dokumentasi MI HIDAYATUT THOWALIB bulan September tahun pelajaran 2012/2013 jumlah keseluruhan siswa adalah sebanyak 217. Jumlah siswa kelas I adalah 43, jumlah siswa kelas II adalah 49, jumlah siswa kelas III adalah 44, Jumlah siswa kelas IV adalah 34, jumlah siswa kelas V adalah 24, dan jumlah siswa kelas VI adalah 23. Perincian jumlah siswa MI HIDAYATUT THOWALIB dapat di lihat pada tabel berikut:

| 1 | | | 2 | | | 3 | | | 4 | | | 5 | | | 6 | | |
|----|----|-----|----|----|-----|----|----|-----|----|----|-----|----|----|-----|----|----|-----|
| L | P | jml | L | P | jml | L | P | jml | L | P | jml | L | P | jml | L | P | jml |
| 7 | 8 | 9 | 10 | 11 | 12 | 13 | 14 | 15 | 16 | 17 | 18 | 19 | 20 | 21 | 22 | 23 | 24 |
| 26 | 17 | 43 | 28 | 21 | 49 | 18 | 26 | 44 | 10 | 24 | 34 | 12 | 12 | 24 | 10 | 13 | 23 |

5. Struktur Organisasi MI Hidayatut Thowalib



6. Prestasi Sekolah



- a. Juara II LABERSA ke-1 2012(MTs. Ma'arif) Pare
- b. Juara harapan II festival diba'iyah putra se-kabupaten Kediri 2012(REMAS AN-NUR)
- c. Juara I lomba komputer tingkat SD/MI se-kec. Pare-badas 2011(HARLAH SDI NU KE-5)
- d. Juara I adzan 2011 (yamaha religi) pare
- e. Juara II putra MTQ tingkat MI se-Kab. Kediri (HUT RI KE-66)
- f. Juara III adzan 2011 (yamaha religi) pare
- g. Juara III lomba baca puisi tingkat SD/MI se kec. Kayen kidul dan sekitarnya 2011 (piala mapenda) MTs Miftahul Huda
- h. Juara II Putri, Perkemahan olimpiade muslim 2010 (LIPIT NURUL ISLAM) Pare-kediri

- i. Juara II lomba pentas drama putra 2010 (perkemahan olimpiade pelajar muslim) pare
- j. Juara II lomba pentas drama putri 2010 (perkemahan olimpiade pelajar muslim) pare
- k. Juara II lomba teknologi tepat guna putri 2010 (perkemahan olimpiade pelajar muslim) pare
- l. Juara III lomba teknologi tepat guna putra 2010 (perkemahan olimpiade pelajar muslim) pare
- m. Juara III lomba baris berbaris putra 2010 (perkemahan olimpiade pelajar muslim) pare
- n. Juara umum III perkemahan olimpiade pelajar muslim 2010 (LIPIT NURUL ISLAM) Pare-kediri
- o. Juara I putri lomba kaligrafi 2009 (hari amal bakti depag K3MI) kec. Pare
- p. Juara I, MTQ SD/MI putra 2008 (PHBN RI ke-62) Kec. Pare
- q. Juara I qosidah 2000 (festifal empat mei) pare-kediri
- r. Juara I cerdas cermat agama islam tingkat MI 1997(HUT RI ke-52) Kecamatan Pare
- s. Juara III lomba bedug berirama 1995 (HUT RI KE-50) kabupaten dati II kediri
- t. Juara III hafalan surat pendek tingkat MI putra 1995 (pekan madaris III) kabupaten Kediri

- u. Juara I cerdas cermat tingkat SD/MI 1994 (HUT RI ke-49) Kecamatan Pare
- v. Juara I lomba mewarnai

7. Program Pemikat MI Hidayatut Thowalib 2012

Program Pemikat merupakan kegiatan ekstra kulikuler yang disediakan oleh Sekolah guna memfasilitasi bakat siswa-siswi MI Hidayatut Thowalib. (wawancara guru 7 September 2012). Adapun program pemikat yang disediakan Sekolah meliputi:

- a. Puisi
- b. Kaligrafi
- c. Mading
- d. Rebbana
- e. Dekorasi
- f. Pidato dua bahasa (arab dan inggris)
- g. Qiro'ah



**UNIVERSITAS ISLAM NEGERI
MAULANA MALIK IBRAHIM MALANG
FAKULTAS PSIKOLOGI**

JL. Gajayana 50 Telp. 551354, 572533 Faks. 572533 Malang 65144
Website: www.uin-malang.ac.id / www.psikolog.uin-malang.ac.id

BUKTI KONSULTASI

Nama : **Muhamad Yazid Mubarak**
NIM : **08410045**
Fakultas : **Psikologi**
Pembimbing : **Dra. Siti Mahmudah, M.Si**
Judul Skripsi : **Pengaruh Dukungan Orangtua Terhadap Motivasi Belajar
Siswa Madrasah Ibtidaiyah Hidayatut Thowalib Tegal
Sari Pare Kediri Periode 2012/2013**

| TANGGAL | KONSULTASI | PARAF |
|-------------------|------------------------------|--------------|
| 30 Mei 2012 | BAB I | 1. |
| 15 Juni 2012 | BAB II | 2. |
| 8 Juli 2012 | BAB III | 3. |
| 9 Juli 2012 | Acc BAB I, II, III | 4. |
| 30 Juli 2012 | BAB IV | 5. |
| 7 Agustus 2012 | BAB V | 6. |
| 15 Agustus 2012 | Acc BAB IV, V | 7. |
| 20 Agustus 2012 | Revisi BAB I, II, III, IV, V | 8. |
| 15 September 2012 | Lampiran dan Abstrak | 9. |

Malang, _____

Dekan Fakultas Psikologi
Universitas Islam Negeri (UIN)
Maulana Malik Ibrahim Malang

Prof. Dr. H. Mulvadi, M.Pd.I
NIP. 19550717 198203 1 005